

2.1

MAX. HEIGHT UNDER HOOK  
SEE TOWER COMBINATION

TYPE OF CRANE	BGL-GROUP 2125-0090
KIND OF CRANE	TOWER CRANE WITH TROLLEY JIB TOP SLEWING, SELF CLIMBING
INSTALLATION	STATIONARY OR TRAVELLING
CALCULATION BASE	DIN 15018-H1/B3 DIN 15020-1AM
LOADMOMENT	MAX. 1173 KNM

**PLANING DIAGRAM 5015**

962-3-020778E

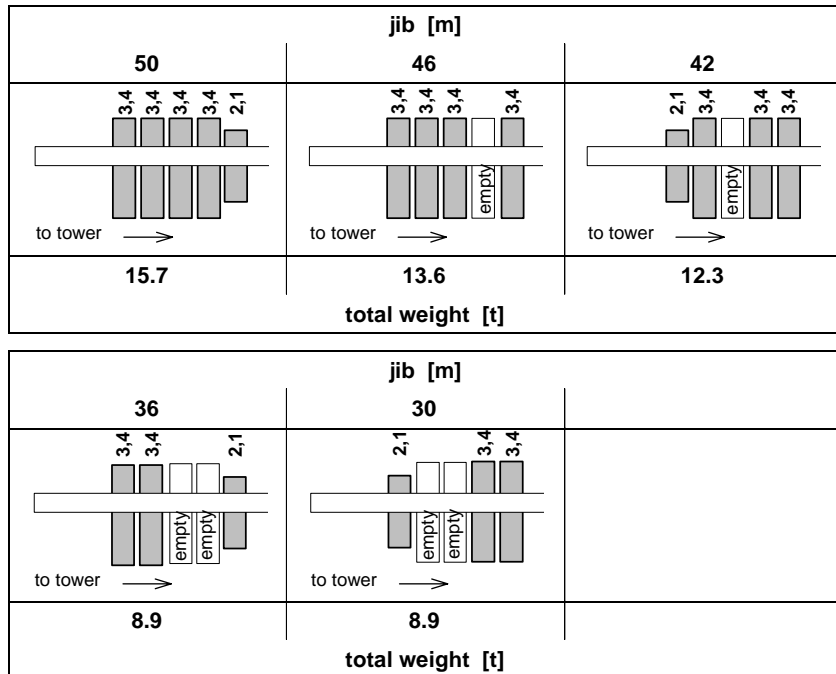


2.2.1.1 **Load capacity table**

radius [m]		20	25	30	36	42	46	50	load capacity [t]	
jib length [m]	50	2.5 - 17.0	4.9	3.8	3.0	2.4	1.9	1.7		<b>1.5</b>
	46	2.5 - 17.4	5.1	3.9	3.1	2.4	2.0	<b>1.8</b>		
	42	2.5 - 18.1	5.3	4.1	3.3	2.6	<b>2.1</b>			
	36	2.5 - 18.5	5.5	4.2	3.3	<b>2.7</b>				
	30	2.5 - 19.6	5.8	4.5	<b>3.6</b>					

The load capacities refer to a hook path of 42.0 m.  
 With greater hook paths the admissible load will be minimized by the additional weight of the hoisting rope = 2.4 kg per meter hook path.

**Arrangement of counterweights with hoisting winch**                      **Hw 628 FU**

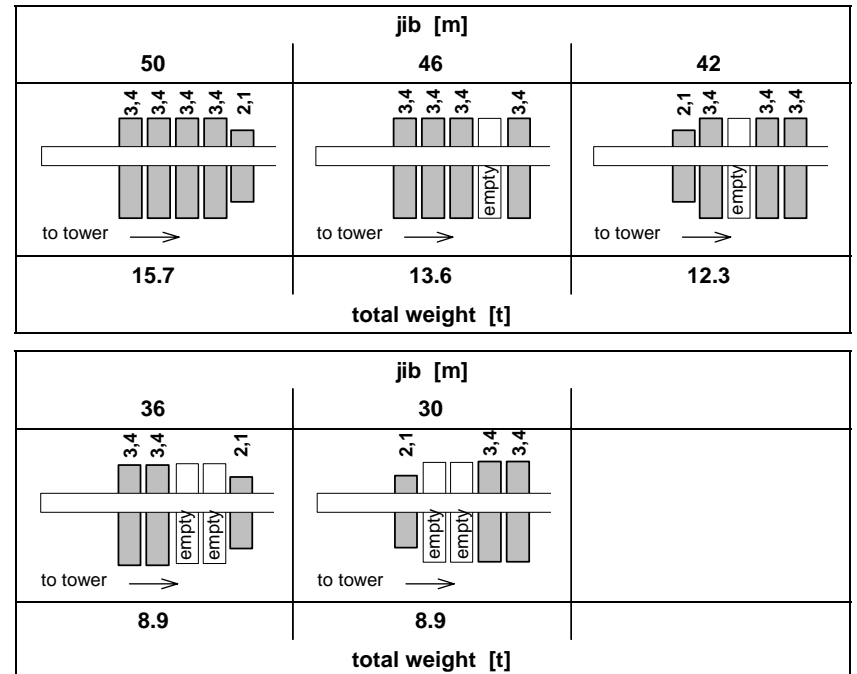


2.2.1.2 **Load capacity table**

radius [m]		20	25	30	36	42	46	50	load capacity [t]	
jib length [m]	50	2.5 - 18.3	5.5	4.3	3.4	2.8	2.3	2.0		<b>1.8</b>
	46	2.5 - 18.7	5.6	4.4	3.5	2.8	2.3	<b>2.1</b>		
	42	2.5 - 19.4	5.8	4.5	3.7	3.0	<b>2.4</b>			
	36	2.5 - 19.7	5.9	4.6	3.7	<b>3.0</b>				
	30	2.5 - 20.7	6.0	4.9	<b>4.0</b>					

The load capacities refer to a hook path of 42.0 m.  
 With greater hook paths the admissible load will be minimized by the additional weight of the hoisting rope = 2.4 kg per meter hook path.



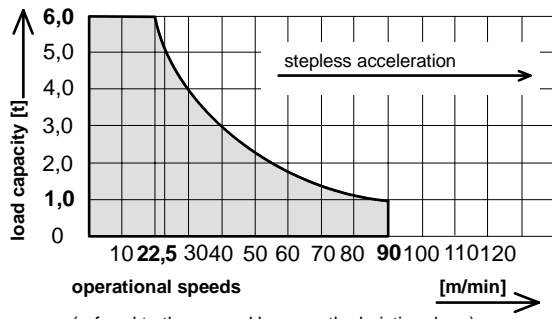

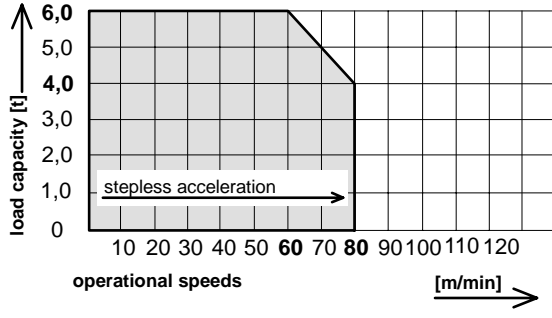

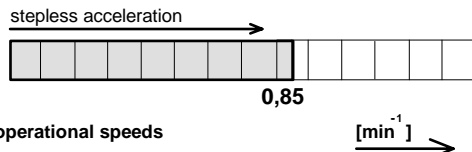
**Arrangement of counterweights with hoisting winch**                      **Hw 628 FU**



2.2.2.1

Operational speeds

400 V, 50 Hz

drive [type]	operational speeds load capacity	maximum hook path [m]	output [kW]	total output [kVA]
Hw 628 FU	hoisting 	190	28	44,0 total output for a simultaneity factor 0,8
				
	operational speeds [m/min] (referred to the second layer on the hoisting drum)			
Kw	traversing		4,0	
				
	operational speeds [m/min]			
Dw	slewing 0,85 min <sup>-1</sup>		5,0	
				
	operational speeds [min <sup>-1</sup> ]			

2.2.3.1

Load capacity table [kg] - data given in distances of meters

DIN 15018/H1 - B3

radius [m]	jib length [m]				
	30	36	42	46	50
15,0	6000	6000	6000	6000	6000
16,0	6000	6000	6000	6000	6000
17,0	6000	6000	6000	6000	6000
18,0	6000	6000	6000	5770	5590
19,0	6000	5800	5660	5410	5250
20,0	5800	5500	5300	5100	4900
21,0	5520	5160	5030	4800	4660
22,0	5220	4880	4760	4540	4400
23,0	4960	4630	4520	4310	4170
24,0	4710	4400	4290	4090	3960
25,0	4500	4200	4100	3900	3800
26,0	4280	3990	3890	3710	3590
27,0	4090	3810	3720	3540	3430
28,0	3920	3650	3560	3390	3280
29,0	3750	3490	3400	3240	3140
30,0	3600	3300	3300	3100	3000
31,0		3220	3130	2980	2880
32,0		3090	3010	2860	2770
33,0		2970	2890	2750	2660
34,0		2860	2790	2650	2560
35,0		2760	2680	2550	2460
36,0		2700	2600	2400	2400
37,0			2500	2370	2290
38,0			2410	2290	2210
39,0			2330	2210	2130
40,0			2250	2140	2060
41,0			2180	2070	1990
42,0			2100	2000	1900
43,0				1930	1860
44,0				1870	1810
45,0				1820	1750
46,0				1800	1700
47,0					1640
48,0					1590
49,0					1550
50,0					1500

The load capacities refer to a hook path of 42m.

2.2.3.2

Load capacity table [kg] - data given in distances of meters

DIN 15018/H1 - B3

radius [m]	jib length [m]				
	30	36	42	46	50
15,0	6000	6000	6000	6000	6000
16,0	6000	6000	6000	6000	6000
17,0	6000	6000	6000	6000	6000
18,0	6000	6000	6000	6000	6000
19,0	6000	6000	6000	5940	5800
20,0	6000	5900	5800	5600	5500
21,0	5950	5620	5520	5310	5190
22,0	5650	5330	5240	5040	4920
23,0	5380	5070	4990	4800	4680
24,0	5130	4830	4750	4570	4460
25,0	4900	4600	4500	4400	4300
26,0	4680	4410	4340	4170	4060
27,0	4490	4220	4150	3990	3890
28,0	4300	4050	3980	3820	3730
29,0	4130	3890	3820	3670	3570
30,0	4000	3700	3700	3500	3400
31,0		3590	3530	3390	3300
32,0		3460	3400	3260	3180
33,0		3340	3280	3140	3060
34,0		3220	3160	3030	2950
35,0		3110	3050	2930	2850
36,0		3000	3000	2800	2800
37,0			2850	2730	2660
38,0			2760	2640	2570
39,0			2670	2560	2490
40,0			2590	2480	2410
41,0			2510	2400	2340
42,0			2400	2300	2300
43,0				2260	2200
44,0				2190	2130
45,0				2130	2070
46,0				2100	2000
47,0					1950
48,0					1900
49,0					1850
50,0					1800

The load capacities refer to a hook path of 42m.

2.2.6.1

Tower configurations

for a free standing stationary crane without climbing device on a concrete foundation

**Slewing part:**

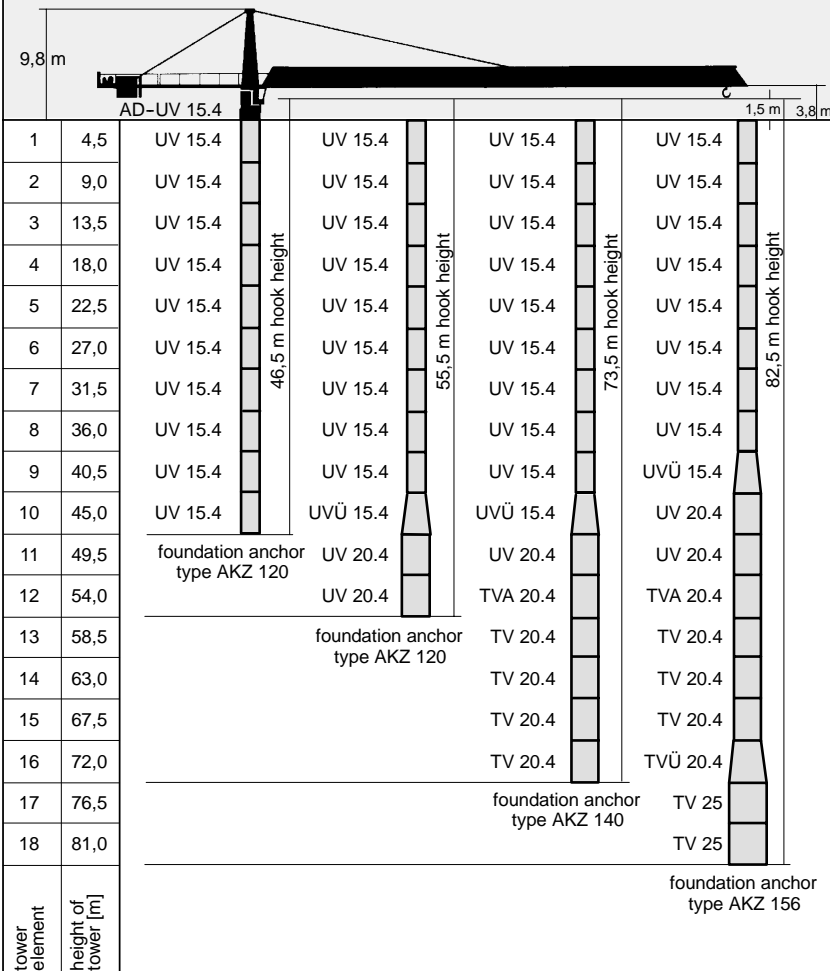
1	4,5	TFS 15.4	TFS 15.4	TFS 15.4	TFS 15.4
2	9,0	TFS 15.4	TFS 15.4	TFS 15.4	TFS 15.4
3	13,5	TFS 15.4	TFS 15.4	TFS 15.4	TFS 15.4
4	18,0	TFS 15.4	TFS 15.4	TFS 15.4	TFS 15.4
5	22,5	TFS 15.4	TFS 15.4	TFS 15.4	TFS 15.4
6	27,0	TFS 15.4	TFS 15.4	TFS 15.4	TFS 15.4
7	31,5	TFS 15.4	TFS 15.4	TFS 15.4	TFS 15.4
8	36,0	TFS 15.4	TFS 15.4	UVA 15.4	UVA 15.4
9	40,5	foundation anchor type AKZ 93	UV 15.4	UV 15.4	UVÜ 15.4
10	45,0		UVÜ 15.4	UVÜ 15.4	UV 20.4
11	49,5		UV 20.4	UV 20.4	UV 20.4
12	54,0		UV 20.4	TVA 20.4	TVA 20.4
13	58,5		foundation anchor type AKZ 120	TV 20.4	TV 20.4
14	63,0			TV 20.4	TV 20.4
15	67,5			TV 20.4	TV 20.4
16	72,0			TV 20.4	TVÜ 20.4
17	76,5			foundation anchor type AKZ 140	TV 25
18	81,0				TV 25
tower element height of tower [m]					foundation anchor type AKZ 156

For data regarding foundation anchors see section 12.  
 The above shown tower configurations are recommended for economic crane installation and may be used in any case.  
 Tower configurations with other tower elements are possible, but must be checked and confirmed by us in every individual case and before crane installation starts.

2.2.6.2 Tower configurations

for a free standing stationary crane without climbing device on a concrete foundation

Slewing part:

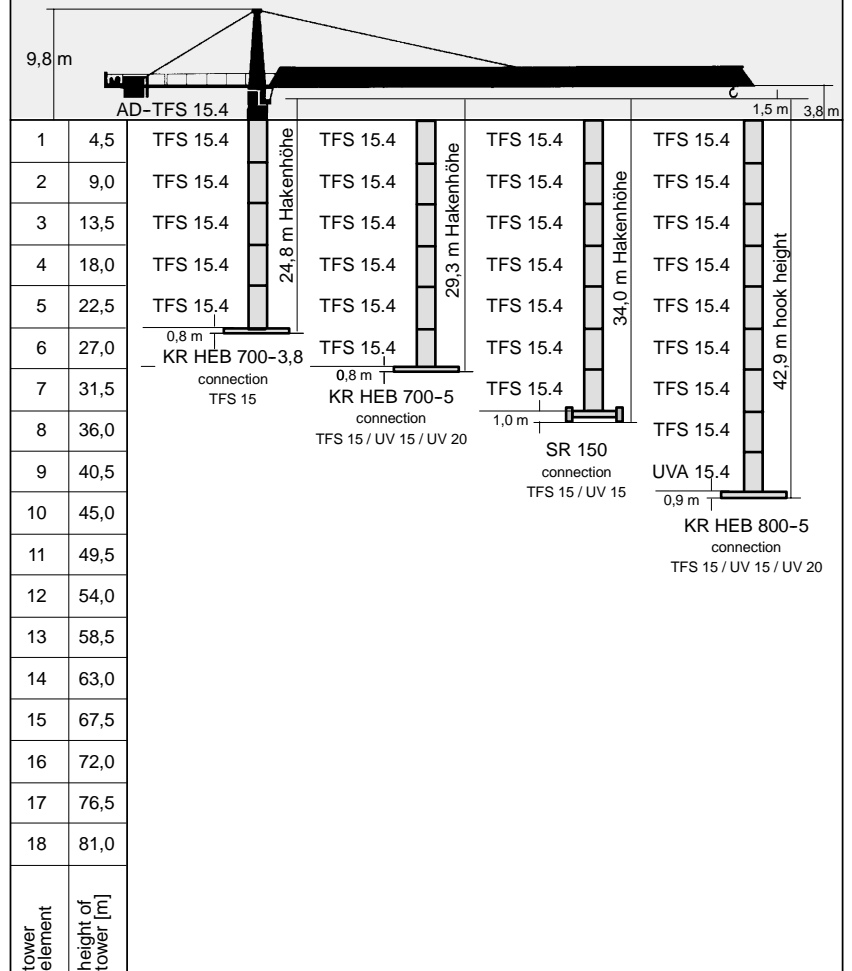


For data regarding foundation anchors see section 12.  
 The above shown tower configurations are recommended for economic crane installation and may be used in any case.  
 Tower configurations with other tower elements are possible, but must be checked and confirmed by us in every individual case and before crane installation starts.

2.2.7.1 Tower configurations

for a free standing stationary crane without climbing device on a base- cross frame

Slewing part:

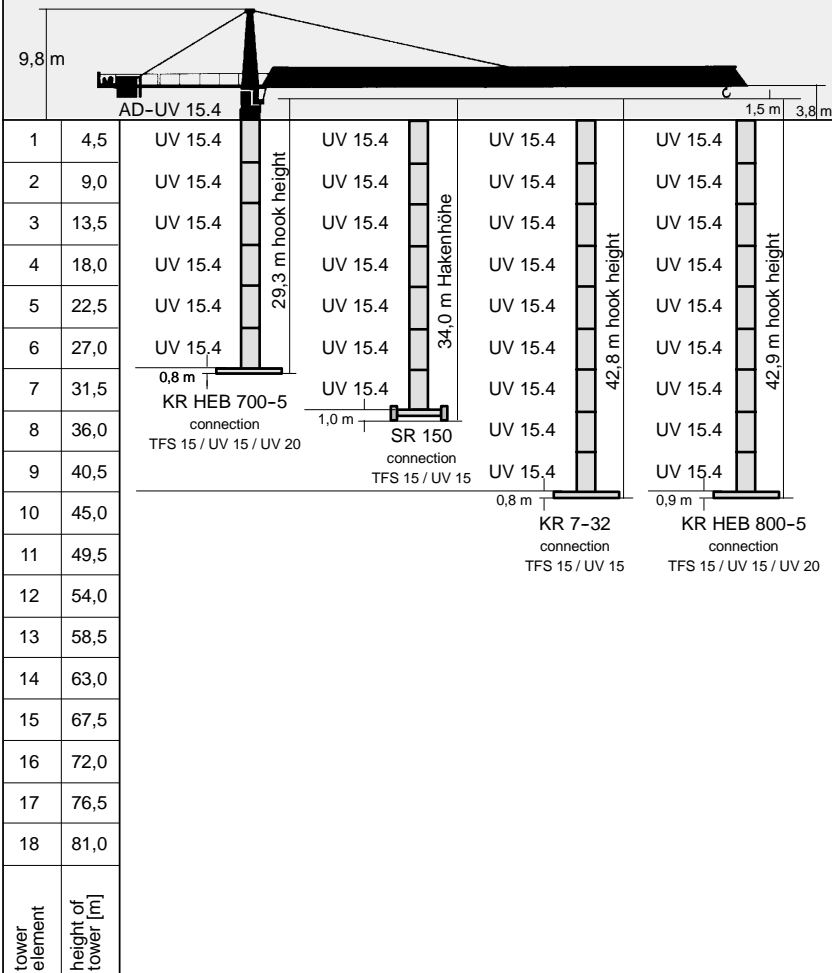


For data regarding base- cross frames see section 12.  
 The above shown tower configurations are recommended for economic crane installation and may be used in any case.  
 Tower configurations with other tower elements are possible, but must be checked and confirmed by us in every individual case and before crane installation starts.

2.2.7.2 Tower configurations

for a free standing stationary crane without climbing device on a base- cross frame

Slewing part:

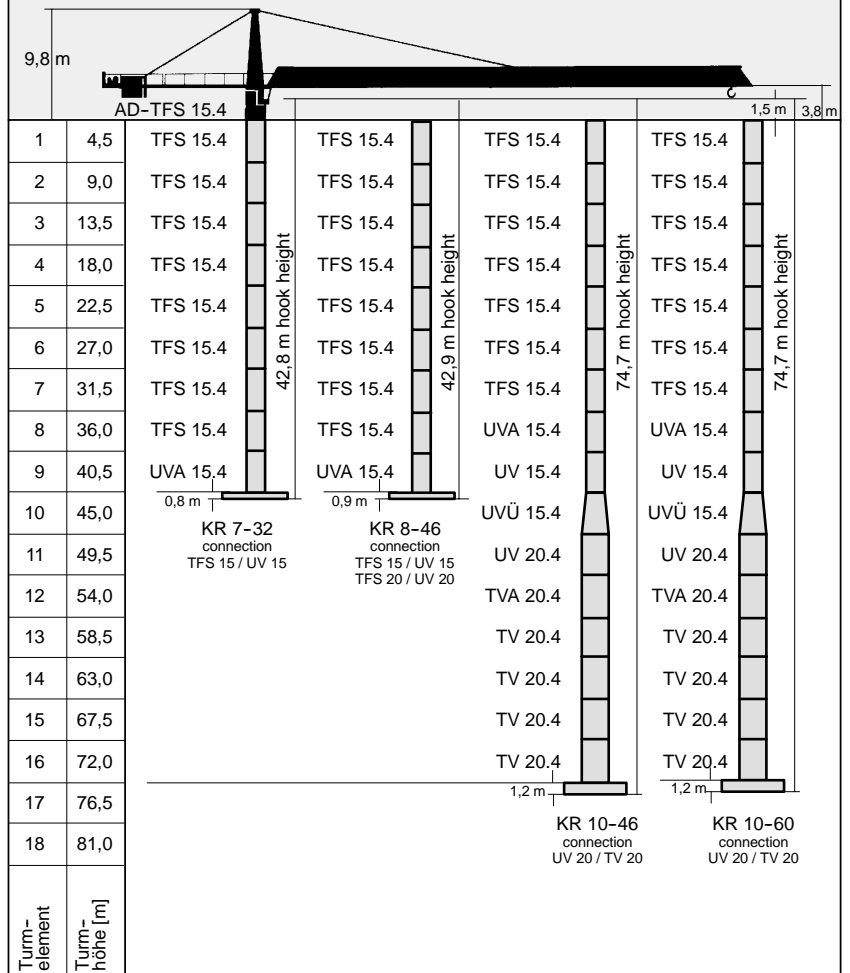


For data regarding base- cross frames see section 12.  
The above shown tower configurations are recommended for economic crane installation and may be used in any case.  
Tower configurations with other tower elements are possible, but must be checked and confirmed by us in every individual case and before crane installation starts.

2.2.7.3 Tower configurations

for a free standing stationary crane without climbing device on a cross frame

Slewing part:

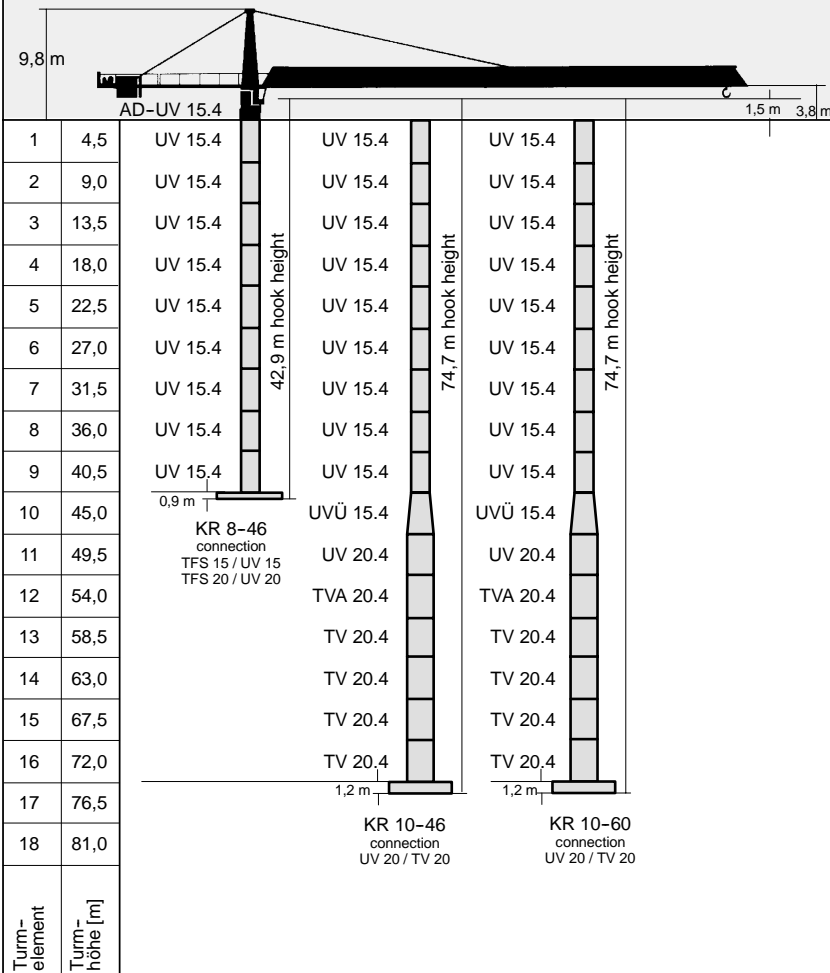


For data regarding cross frames see section 12.  
The above shown tower configurations are recommended for economic crane installation and may be used in any case.  
Tower configurations with other tower elements are possible, but must be checked and confirmed by us in every individual case and before crane installation starts.

2.2.7.4 Tower configurations

for a free standing stationary crane without climbing device on a cross frame

Drehteil:

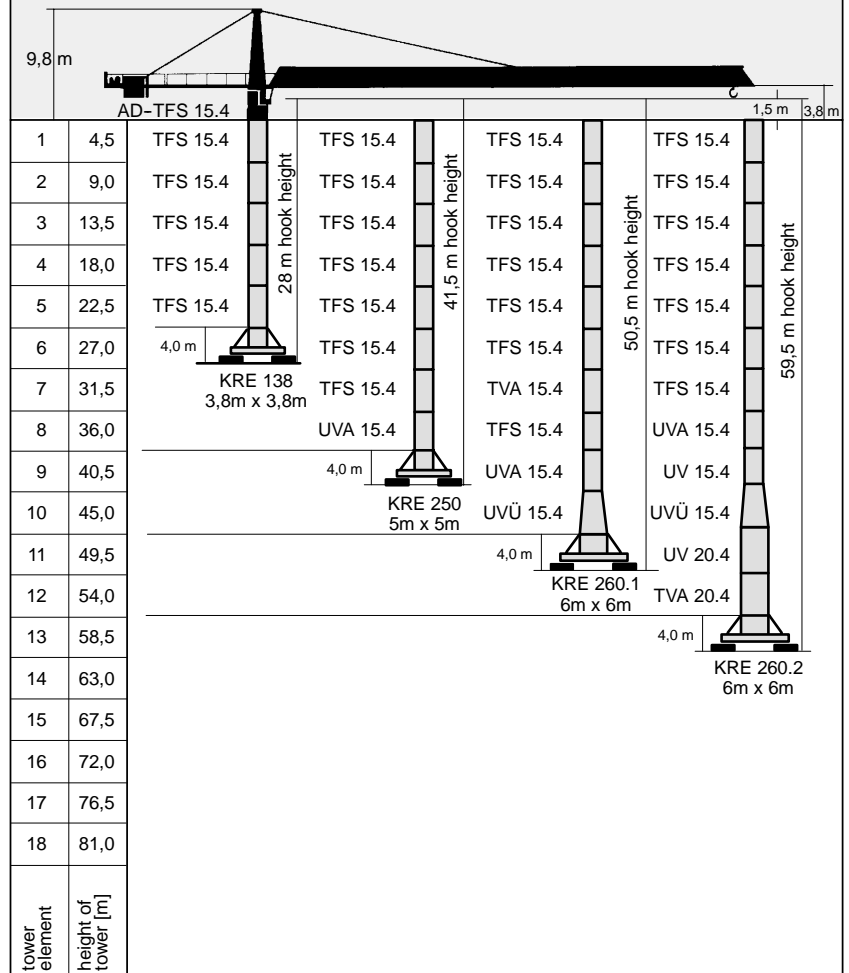


For data regarding cross frames see section 12.  
The above shown tower configurations are recommended for economic crane installation and may be used in any case.  
Tower configurations with other tower elements are possible, but must be checked and confirmed by us in every individual case and before crane installation starts.

2.2.8.1 Tower configurations

for a free standing stationary crane without climbing device on a cross frame element

Slewing part:



For data regarding cross frame elements see section 12.  
The above shown tower configurations are recommended for economic crane installation and may be used in any case.  
Tower configurations with other tower elements are possible, but must be checked and confirmed by us in every individual case and before crane installation starts.

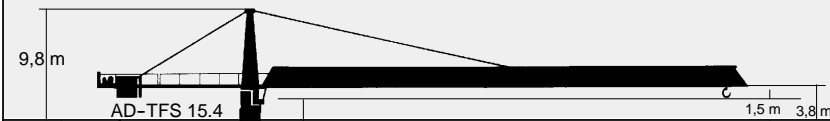




2.2.9.2 Tower configurations

for a travelling crane without climbing device

Slewing part:



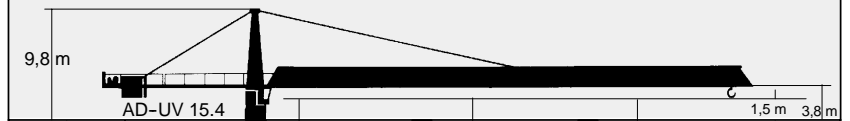
1	4,5	TFS 15.4	64,5 m hook height
2	9,0	TFS 15.4	
3	13,5	TFS 15.4	
4	18,0	TFS 15.4	
5	22,5	TFS 15.4	
6	27,0	TFS 15.4	
7	31,5	TFS 15.4	
8	36,0	TFS 15.4	
9	40,5	UVA 15.4	
10	45,0	UVÜ 15.4	
11	49,5	UV 20.4	
12	54,0	TVA 20.4	
13	58,5	TV 20.4	
14	63,0	4,5 m	
15	67,5	UW 260.3 6m x 6m	
16	72,0		
17	76,5		
18	81,0		
tower element	height of tower [m]		

For data regarding undercarriages see section 12.  
 The above shown tower configurations are recommended for economic crane installation and may be used in any case.  
 Tower configurations with other tower elements are possible, but must be checked and confirmed by us in every individual case and before crane installation starts.

2.2.9.3 Tower configurations

for a travelling crane without climbing device

Slewing part:



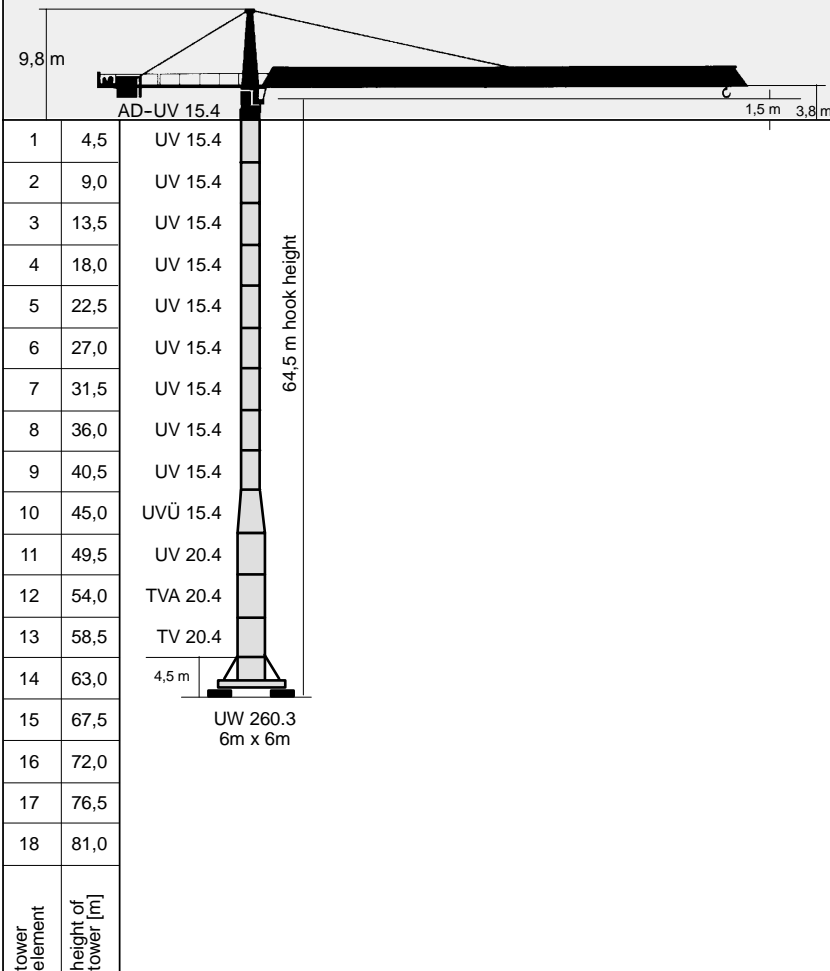
1	4,5	UV 15.4	UV 15.4	UV 15.4	51,0 m hook height
2	9,0	UV 15.4	UV 15.4	UV 15.4	
3	13,5	UV 15.4	UV 15.4	UV 15.4	
4	18,0	UV 15.4	UV 15.4	UV 15.4	
5	22,5	UV 15.4	UV 15.4	UV 15.4	
6	27,0	UV 15.4	UV 15.4	UV 15.4	
7	31,5	UV 15.4	UV 15.4	UV 15.4	
8	36,0	UV 15.4	UV 15.4	UV 15.4	
9	40,5	4,5 m	UV 15.4	UVÜ 15.4	
10	45,0	UW 250 5m x 5m	UVÜ 15.4	TVA 20.4	
11	49,5	4,5 m	4,5 m	4,5 m	
12	54,0		UW 260.1 6m x 6m	UW 260.2 6m x 6m	
13	58,5				
14	63,0				
15	67,5				
16	72,0				
17	76,5				
18	81,0				
tower element	height of tower [m]				

For data regarding undercarriages see section 12.  
 The above shown tower configurations are recommended for economic crane installation and may be used in any case.  
 Tower configurations with other tower elements are possible, but must be checked and confirmed by us in every individual case and before crane installation starts.

2.2.9.4 Tower configurations

for a travelling crane without climbing device

Slewing part:



For data regarding undercarriages see section 12.  
 The above shown tower configurations are recommended for economic crane installation and may be used in any case.  
 Tower configurations with other tower elements are possible, but must be checked and confirmed by us in every individual case and before crane installation starts.

2.3.1 Colli list

Item	pcs.	Designation	Colli	L (m)	B (m)	H (m)	weight (kg)	volume (m <sup>3</sup> )
1	1	Tower top complete with platforms and bracing parts, upper slewing frame KDV, slewing drive, lower slewing frame		6,85	2,01	1,84	4520	25,33
2	1	AD - TFS 15.4		3,00	1,54	1,92	1200	8,87
		AD - UV 15.4		3,00	1,54	1,92	1760	8,87
		AD - TFS 20.4		3,00	2,02	2,42	1600	14,66
		AD - UV 20.4		3,00	2,02	2,42	1800	14,66
3	1	driver's cabin with suspension		2,80	2,15	2,45	1100	14,75
4	1	driver's cabin suspension		1,13	1,67	0,54	210	1,02
5	1	counterjib with bracing parts		13,07	2,37	0,48	2370	14,87
6	1	machinery platform Hw 628 FU with hoisting rope (Ø 16 mm x 170 m)		2,34	2,36	1,81	2420	9,99

Loose and small parts can be distributed depending on the available space.

2.3.2

Colli list

item	pcs.	Designation	Colli	L (m)	B (m)	H (m)	weight (kg)	volume (m <sup>3</sup> )
7	1	jib part 1		12,21	1,18	1,59	1700	22,91
8	1	jib part 2		4,27	1,10	1,41	490	6,62
9	1	jib part with bracing parts 3		12,27	1,10	1,55	2075	20,92
10	1	jib part 4		4,27	1,1	1,41	480	6,62
11	1	jib part 5		6,25	1,10	1,41	675	9,69
12	1	jib part 6		12,2	1,10	1,41	980	18,92
13	1	rope swivel traverse		0,69	1,12	0,44	90	0,34
14	1	trolley		1,54	1,36	0,92	210	1,92
15	1	hook block (loose part)		0,50	0,22	1,03	350	0,11
16	1	standard hand-rail (loose part)		3,0	1,10	1,00	300	3,30
17	1	box (small part)		1,6	0,90	0,80	350	1,15

Loose and small parts can be distributed depending on the available space.

2.5.1

Assembly weights - Slewing part

<b>Tower top complete with adapter piece AD - TFS 15.4</b> bracing brackets (1x600 mm, 2x 5200mm), driver's cabin, driver's cabin suspension, platform and standard handrail - adapter piece AD - TFS 15.4 - driver's cabin with suspension and standard handrail	<b>6 950 kg</b> 1 200 kg 1 230 kg
<b>Tower top complete with adapter piece AD - UV 15.4</b> bracing brackets (1x600 mm, 2x 5200mm), driver's cabin, driver's cabin with suspension and standard handrail - adapter piece AD - UV 15.4 - driver's cabin with suspension and standard handrail	<b>7 510 kg</b> 1 760 kg 1 230 kg
<b>Tower top complete with adapter piece AD - TFS 20.4</b> bracing brackets (1x600 mm, 2x 5200mm), driver's cabin, driver's cabin with suspension and standard handrail - adapter piece AD - TFS 20.4 - driver's cabin with suspension and standard handrail	<b>7 350 kg</b> 1 600 kg 1 230 kg
<b>Tower top complete with adapter piece AD - UV 20.4</b> bracing brackets (1x600 mm, 2x 5200mm), driver's cabin, driver's cabin with suspension and standard handrail - adapter piece - UV 20.4 - driver's cabin with suspension and standard handrail	<b>7 550 kg</b> 1 800 kg 1 230 kg
<b>Copunterjib with hoisting winch Hw 628 FU, complete</b> machinery platform Hw 628 FU with hoisting rope (Ø 16 mm x 170 m), 2 bracing brackets (2 x 6500 mm) and standard handrail - counterjib with 2 bracing brackets and standard handrail - machinery platf. Hw 628 FU with hoisting rope (Ø 16 mm x 170 m)	<b>5 000 kg</b> 2 580 kg 2 420 kg
<b>50 m trolley jib, complete</b> - bracing brackets, trolley, traversing ropes, hook block and standard handrails	<b>6 700 kg</b>
<b>46 m trolley jib, complete</b> - bracing brackets, trolley, traversing ropes, hook block and standard handrails	<b>6 240 kg</b>
<b>42 m trolley jib, complete</b> - bracing brackets, trolley, traversing ropes, hook block and standard handrails	<b>5 750 kg</b>
<b>36 m trolley jib, complete</b> - bracing brackets, trolley, traversing ropes, hook block and standard handrails	<b>5 080 kg</b>
<b>30 m trolley jib, complete</b> - bracing brackets, trolley, traversing ropes, hook block and standard handrails	<b>4 730 kg</b>

2.5.2

Assembly weights - cross frame / cross frame elements / undercarriage

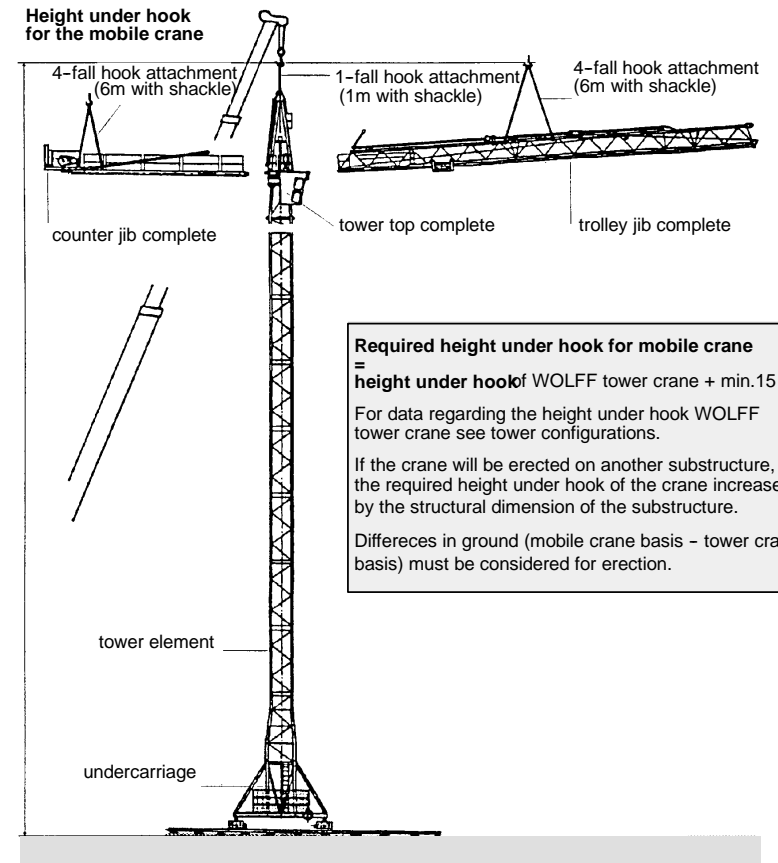
<p><b>Cross frame KR 8 - 46</b> (without optional features) <b>5 000 kg</b></p> <ul style="list-style-type: none"> <li>- 4 spigots TFS 15.4 200 kg</li> <li>- 4 spigots UV 15.4 272 kg</li> <li>- 4 spigots TFS 20.4 200 kg</li> <li>- 4 spigots UV 20.4 272 kg</li> <li>- option: 4 corner spindle 800 kg</li> </ul>
<p><b>Cross frame KR 10 - 60</b> (without optional features) <b>1 0000 kg</b></p> <ul style="list-style-type: none"> <li>- 4 spigots UV 20 272 kg</li> <li>- 4 spigots TV 20 684 kg</li> <li>- option: 4 corner spindle 800 kg</li> </ul>
<p><b>Cross frame element KRE 250 complete</b> <b>5 750 kg</b></p> <ul style="list-style-type: none"> <li>- cross frame platform with swivel arms, corner bearings and transport safety devices 2 730 kg</li> <li>- base mast part with diagonal struts and track rod 3 020 kg</li> </ul>
<p><b>Cross frame element KRE 260.1 complete</b> <b>8100 kg</b></p> <ul style="list-style-type: none"> <li>- cross frame platform with swivel arms, corner bearings and transport safety devices 4320 kg</li> <li>- base mast part with diagonal struts and track rod 3780 kg</li> </ul>
<p><b>Cross frame element KRE 260.2 complete</b> <b>10900 kg</b></p> <ul style="list-style-type: none"> <li>- cross frame platform with swivel arms, corner bearings and transport safety devices 5455 kg</li> <li>- base mast part with diagonal struts and track rod 5445 kg</li> </ul>
<p><b>Undercarriage UW 260.1 complete</b> <b>11400 kg</b></p> <ul style="list-style-type: none"> <li>- undercarriage platform with swivel arms, subframes and transport safety devices 7150 kg</li> <li>- base mast part with diagonal struts and track rod 4250 kg</li> </ul>
<p><b>Undercarriage UW 260.2 complete</b> <b>13930 kg</b></p> <ul style="list-style-type: none"> <li>- undercarriage platform with swivel arms, subframes and transport safety devices 8050 kg</li> <li>- base mast part with diagonal struts and track rod 5880 kg</li> </ul>

2.5.3

Required height under hook for the mobile crane

**Warning!**

Use suspension ropes with sufficient capacity and observe suspension plan!



2.6.1

Trolley jib - suspension plan



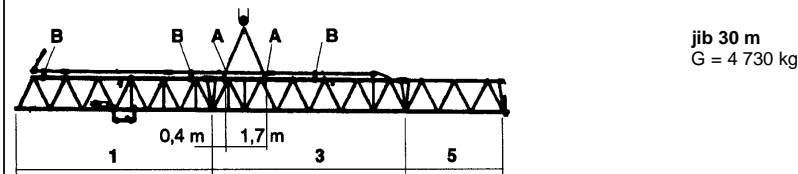
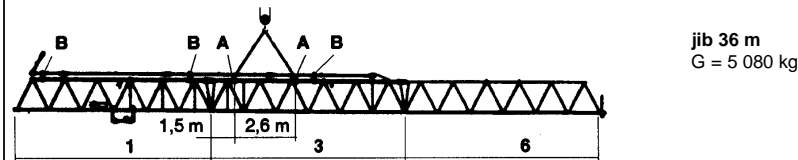
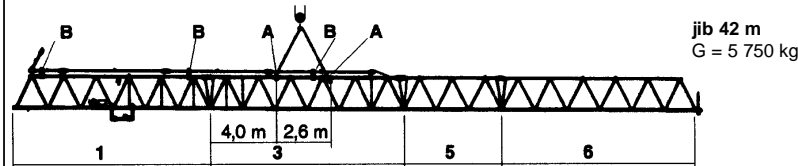
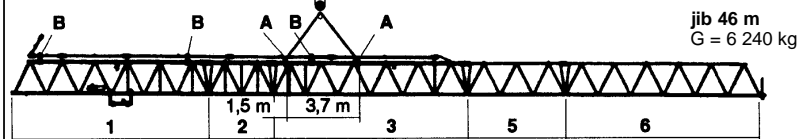
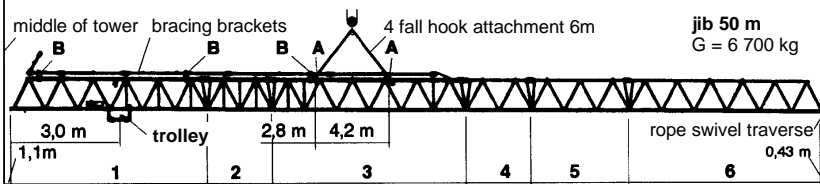
**Danger in case of disassembly!**

Release fixing bolts at the pivot point of the jib. Jib must be balanced before it can be extended. There mustn't be any loose parts on the jib.

The parts of the jib are labeled with a building part identification at the top chord.

<b>Lengths:</b>	jib part	1/3/6	=	12,0 m
	jib part	5	=	6,0 m
	jib part	2/4	=	4,0 m
	rope swivel traverse		=	0,43 m

More details about suspension **A** and support **B** and support **C** see next side.



2.7.1

Hoisting rope

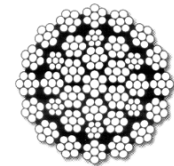
for hoisting winch Hw 628 FU

Cable Ø = 16 mm + 4% + 2%

design according to DIN 15 020  
kind of operation TWG 1 Am

First equipment

**CASAR STARLIFT -**  
non twisting  
flexible hoisting rope  
with compressed  
cable core



nominal strength = 1770 N/mm<sup>2</sup>  
calc. breaking strength = 234,1 kN  
min. breaking strength = 178,1 kN  
weight per meter = 1,191 kg

Design

langs lay rope, right handed,  
made from cable wire.

middle space factor = 0,654  
middle spinning loss factor = 0,76  
middle weight factor = 0,90  
total twist number = 245

Number of carryig wires in the outer strands  
is to be judged by the state of wear according to  
DIN 15020 Bl. 2 / ISO DIS 4309 = 112

Basic equipment

cable length	170 m	for crane with:	cable	2 fall
		radius	50 m	
		hook path	42 m	

By lengthening the hook path by 1 tower element (4,5 m) the necessary cable length increases by 9 m for operation in 2 falls .

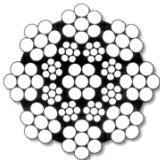


**Attention!**  
A wire cable is a complex machine element.

Conventional cable design frequently doesn't meet the requirements of modern rope drives. short service life is the result.

2.7.2

**Traversing rope**

<p><b>Cable Ø = 6 mm</b>      + 4%                                  + 2%</p>	<p>design according to DIN 15 020 kind of operation TWG 1 Am</p>										
<p><b>First equipment</b></p>	<p><b>CASAR UNILIFT -</b> cable with 8 strands in non-overlapped double parallel construction made out of uncompressed strands.</p> 										
<p><b>Design</b></p>	<p><b>nominal strength</b>      = 1770 N/mm<sup>2</sup> <b>calc. breaking strength</b> = 35,4 kN <b>min. breaking strength</b> = 32,3 kN <b>weight per meter</b>      = 0,157 kg</p> <p>ordinary lay rope, right handed, surface of wires zinc coated.</p> <p>middle space factor      = 0,643 middle spinning loss factor = 0,90 middle weight factor      = 0,87 total twist number      = 119</p> <p>Number of carryig wires in the outer strands is to be judged by the state of wear according to DIN 15020 Bl. 2 / ISO DIS 4309 = 56</p>										
<p><b>Basic equipment</b></p> <table border="1" style="width: 100%; border-collapse: collapse; margin-top: 10px;"> <tr> <td style="width: 30%; text-align: center;">cable lengths</td> <td style="width: 30%; text-align: center;">1 x 57 m</td> <td style="width: 20%; text-align: center;">for crane with:</td> <td style="width: 20%; text-align: center;">radius</td> <td style="width: 10%; text-align: center;">50 m</td> </tr> <tr> <td></td> <td style="text-align: center;">1 x 99 m</td> <td></td> <td></td> <td></td> </tr> </table>		cable lengths	1 x 57 m	for crane with:	radius	50 m		1 x 99 m			
cable lengths	1 x 57 m	for crane with:	radius	50 m							
	1 x 99 m										
<p><b>! Attention!</b> <b>A wire cable is a complex machine element.</b></p> <p>Conventional cable design frequently doesn't meet the requirements of modern rope drives. short service life is the result.</p>											

2.8.1

**Insertable exterior climbing gear**

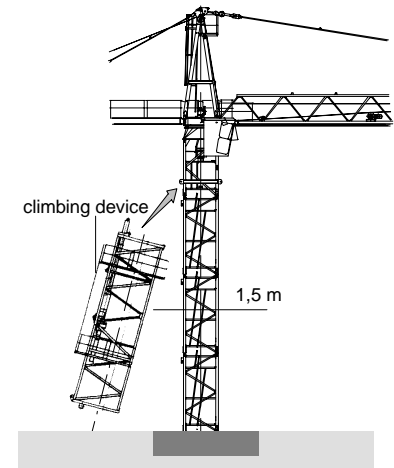
The following removable hydraulic exterior climbing gear can be used with the tower crane WOLFF 5015.

-      **KWH 15.2**

KWH 15.2 information is given in a separate documentation in section 12, Additional Equipment.

**Min. height with stationary erection:**  
**3 tower elements = 13,5 m tower height**

**Min. height with travelling erection:**  
**2 tower elements + undercarriage**  
**appr. 13,5 m tower height**



2.8.1.1

**Balancing weights for climbing**

- \* The indicated balancing weights are gross-weights of towersections or a load.
- \*\* The given (m) data for position of weights along jib are approximate only and refer to center of tower. The exact balance point is arrived at by short moves of trolley and is considered arrived when the towersection concerned lifts out of the resting tower without any friction. Be careful and try repeatedly until best possible balancing is assured.

--- balancing not possible

for climbing in UV-15.4 tower elements	jib				
	30 m	36 m	42 m	46 m	50 m
with balancing load * UV 15.4 = 1,73 t	** 13,8	12,1	11,0	8,6	6,3
without balancing load	--	--	--	31,9	24,2
for climbing in TFS 15.4 tower elements					
with balancing load * TFS 15.4 = 1,41 t	** 16,6	14,6	13,4	10,5	8,0
without balancing load	--	--	--	33,2	25,5



**Danger!**

While climbing, the slewing part of the crane must be locked in the direction of of moving towersections in or out the tower. Until tower has been repinned fully and in all holes, the balancing must be kept and the slew part must remain locked. (For details, please see operational manual KWH 15.2). The climbing device is an auxiliary device for assembly and mustn't stay at the tower crane WOLFF under normal working conditions.

**2.8.5 Insertable internal climbing device KSH 15**

For the use of the WOLFF 5015 in connection with the internal climbing device KSH15, the tower configuration has to be observed as shown here.

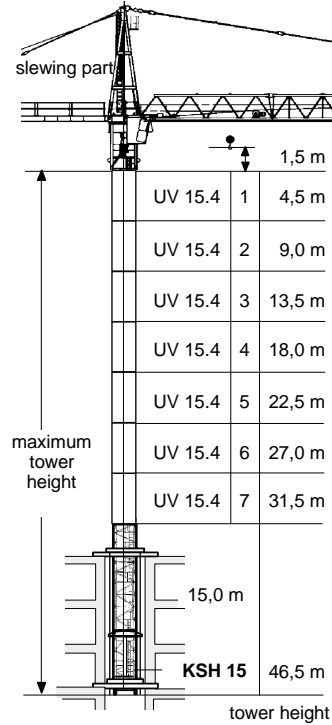
KSH15 informations are given in a separate documentation in section 12, Additional Equipment.

**2.8.5.1 Table of balancing weights**

\* The indicated balancing weights are gross-weights of tower elements or load.

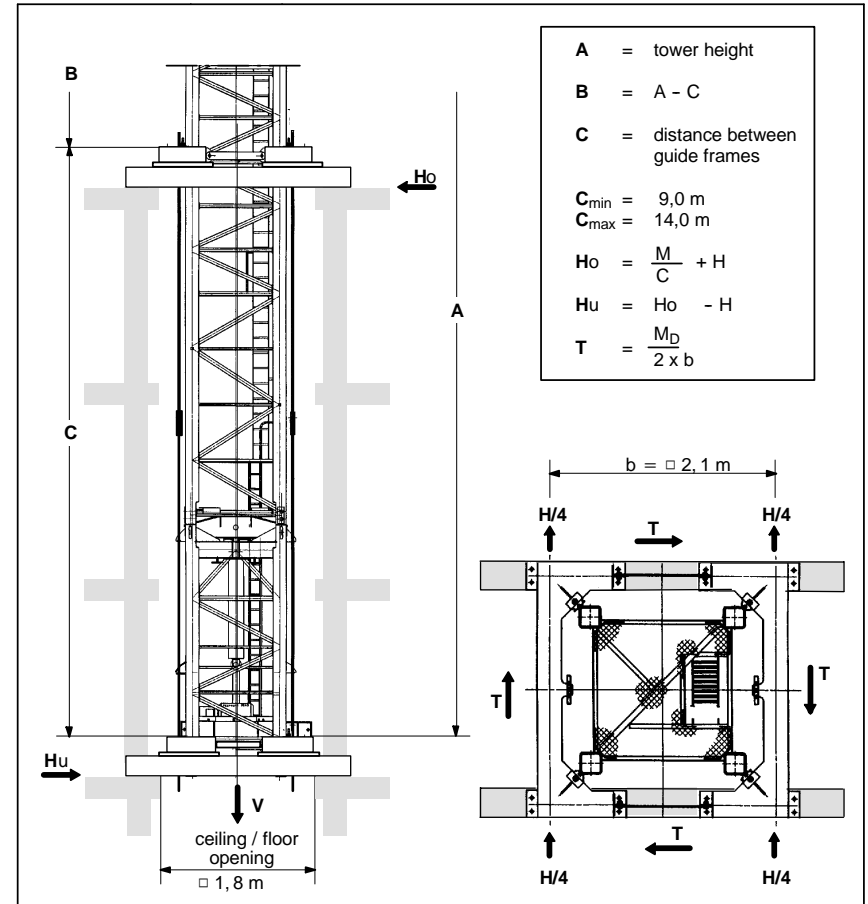
\*\* The indicated radius refers to the centre of the tower and shall be treated as standard value. Exact balancing must be achieved by travelling the trolley with a tower element or load and can be checked by measuring the distance between corner posts and tensioning brackets. This distance at all four corner posts shall be of the same dimension.

-- balancing not possible



balancing weight *	jib				
	30 m	36 m	42 m	46 m	50 m
UV 15 = 1,75 t	--	34,2	31,8	29,8	28,8
weight = 3,00 t	20,9	20,0	18,5	17,4	16,8

**2.8.5.2 Fixed end forces in building for hydraulic internal climbing device KSH 15**



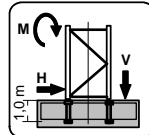
**Fixed end forces in building (kN)**

A (m)	46,5				42,0				37,5				33,0			
	9	10	12	14	9	10	12	14	9	10	12	14	9	10	12	14
<b>V</b>	615	615	615	615	598	598	598	598	580	580	580	580	563	563	563	563
<b>Ho</b>	372	343	299	267	315	291	254	228	263	244	214	193	218	203	179	162
<b>Hu</b>	294	265	221	189	243	219	182	156	198	179	149	128	176	158	132	113
<b>T</b>	32	32	32	32	32	32	32	32	32	32	32	32	32	32	32	32



3.1.1 Foundation loads according to DIN

inclusive all dynamic factors taking into account the theory of second level for a stationary tower crane on a concrete foundation according to tower configuration without a climbing device



M = moment    H = horizontal force    V = vertical load

**Foundation loads** **jib 30 - 50 m**

Hook height [m]	Crane in service torque moment 135 kNm			Crane out of service			Assembly		
	M [kNm]	H [kN]	V [kN]	M [kNm]	H [kN]	V [kN]	M [kNm]	H [kN]	V [kN]
10,5	1013	17	359	194	35	353	1110	9	196
15,0	1102	18	374	367	39	366	1158	10	209
19,5	1202	19	388	575	43	379	1214	11	222
24,0	1314	21	403	824	49	392	1280	13	235
28,5	1439	22	417	1106	54	405	1354	14	248
33,0	1581	23	432	1425	60	418	1439	15	261
37,5	1740	24	446	1785	65	431	1536	16	274
42,0	1905	26	465	2188	72	480	1637	18	292
46,5	2070	27	487	2647	78	498	1741	19	312
51,0	2239	29	507	3103	85	518	1851	21	330
55,5	2424	30	527	3618	92	536	1971	22	348
60,0	2577	33	574	4148	101	575	2085	25	390
64,5	2776	35	605	4748	110	603	2223	27	419
69,0	2994	37	636	5401	117	631	2374	29	447
73,5	3230	39	667	6130	126	660	2538	31	475
78,0	3420	41	712	6835	137	700	2692	33	516
82,5	3667	44	747	7641	146	732	2873	36	548























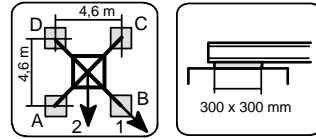






3.2.6.2 Centerballasts and corner loads according to DIN 15019

for a stationary tower crane on a cross frame without climbing drive

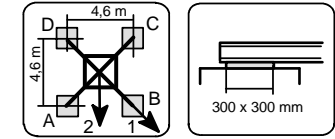


**KR 10 - 46** Corner distance 4,6 m x 4,6 m **jib 36 m**

hook height [m]	centerballast [t]	jib position	crane in service torque moment: 135 kNm					horizontal force [kN]	jib position	crane out of service torque moment: 0 kNm					horizontal force [kN]
			corner loads				horizontal force [kN]			corner loads				horizontal force [kN]	
			A [kN]	B [kN]	C [kN]	D [kN]				A [kN]	B [kN]	C [kN]	D [kN]		
11,7	25,0	1	164	295	164	33	18	1	112	204	112	19	38		
		2	257	257	71	71		2	177	177	46	46			
16,2	25,0	1	167	308	167	27	20	1	115	214	115	16	42		
		2	267	267	68	68		2	185	185	75	75			
20,7	25,0	1	171	322	171	19	21	1	118	225	118	11	54		
		2	278	278	63	63		2	201	201	110	110			
25,2	25,0	1	174	338	174	10	22	1	159	261	159	57	59		
		2	290	290	58	58		2	231	231	87	87			
29,7	25,0	1	177	355	177	0	23	1	162	306	162	18	65		
		2	303	303	52	52		2	264	264	61	61			
34,2	35,0	1	205	399	205	12	24	1	190	381	190	0	70		
		2	342	342	69	69		2	325	325	56	56			
38,7	45,0	1	234	445	234	23	26	1	195	484	195	0	75		
		2	383	383	84	84		2	390	390	47	47			
43,2	62,5	1	281	512	281	50	27	1	231	600	231	0	81		
		2	444	444	117	117		2	478	478	54	54			
47,7	82,5	1	334	588	334	80	28	1	274	728	274	0	86		
		2	513	513	155	155		2	576	576	62	62			
52,2	105,0	1	395	669	395	120	30	1	329	861	329	0	92		
		2	589	589	201	201		2	684	684	75	75			
56,7	127,5	1	456	753	456	159	31	1	377	1007	377	0	99		
		2	666	666	246	246		2	797	797	84	84			
61,2	150,0	1	522	839	522	205	34	1	435	1160	435	0	108		
		2	747	747	298	298		2	918	918	97	97			
65,7	175,0	1	592	934	592	250	36	1	487	1335	487	0	116		
		2	834	834	350	350		2	1049	1049	105	105			
70,2	205,0	1	674	1044	674	304	38	1	556	1523	556	0	124		
		2	936	936	413	413		2	1198	1198	120	120			
74,7	237,5	1	762	1162	762	363	40	1	628	1733	628	0	133		
		2	1045	1045	480	480		2	1360	1360	135	135			

3.2.6.3 Centerballasts and corner loads according to DIN 15019

for a stationary tower crane on a cross frame without climbing drive

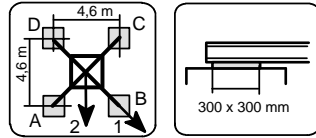


**KR 10 - 46** Corner distance 4,6 m x 4,6 m **jib 42 m**

hook height [m]	centerballast [t]	jib position	crane in service torque moment: 135 kNm					horizontal force [kN]	jib position	crane out of service torque moment: 0 kNm					horizontal force [kN]
			corner loads				horizontal force [kN]			corner loads				horizontal force [kN]	
			A [kN]	B [kN]	C [kN]	D [kN]				A [kN]	B [kN]	C [kN]	D [kN]		
11,7	20,0	1	162	289	162	35	18	1	116	225	116	7	39		
		2	251	251	72	72		2	193	193	39	39			
16,2	20,0	1	165	301	165	29	20	1	119	236	119	2	43		
		2	261	261	69	69		2	202	202	36	36			
20,7	20,0	1	168	316	168	21	21	1	118	253	118	0	54		
		2	272	272	64	64		2	212	212	33	33			
25,2	20,0	1	172	331	172	12	22	1	114	274	114	0	60		
		2	284	284	59	59		2	233	233	80	80			
29,7	20,0	1	175	349	175	1	23	1	160	310	160	9	65		
		2	298	298	52	52		2	266	266	53	53			
34,2	30,0	1	203	393	203	13	25	1	178	396	178	0	70		
		2	337	337	69	69		2	328	328	48	48			
38,7	42,5	1	238	446	238	29	26	1	194	502	194	0	76		
		2	385	385	90	90		2	400	400	45	45			
43,2	62,5	1	291	520	291	62	27	1	241	621	241	0	81		
		2	453	453	129	129		2	495	495	56	56			
47,7	82,5	1	344	597	344	91	28	1	282	753	282	0	87		
		2	523	523	165	165		2	595	595	63	63			
52,2	105,0	1	405	679	405	131	30	1	336	889	336	0	93		
		2	599	599	211	211		2	704	704	76	76			
56,7	127,5	1	466	763	466	168	31	1	382	1038	382	0	99		
		2	676	676	255	255		2	818	818	84	84			
61,2	150,0	1	533	850	533	215	34	1	439	1192	439	0	108		
		2	757	757	308	308		2	939	939	96	96			
65,7	177,5	1	608	952	608	265	36	1	502	1370	502	0	116		
		2	851	851	365	365		2	1078	1078	109	109			
70,2	207,5	1	690	1062	690	319	38	1	570	1563	570	0	124		
		2	953	953	427	427		2	1228	1228	123	123			
74,7	240,0	1	779	1182	779	376	40	1	639	1777	639	0	133		
		2	1064	1064	494	494		2	1392	1392	135	135			

3.2.6.4 Centerballasts and corner loads according to DIN 15019

for a stationary tower crane on a cross frame without climbing drive

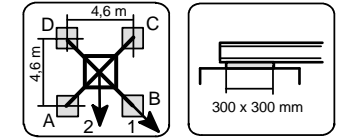


**KR 10 - 46** Corner distance 4,6 m x 4,6 m **jib 46 m**

hook height [m]	centerballast [t]	jib position	crane in service torque moment: 135 kNm					horizontal force [kN]	jib position	crane out of service torque moment: 0 kNm					horizontal force [kN]
			corner loads				horizontal force			corner loads				horizontal force	
			A [kN]	B [kN]	C [kN]	D [kN]				A [kN]	B [kN]	C [kN]	D [kN]		
11,7	17,5	1	160	286	160	34	18	1	80	283	80	0	39		
		2	249	249	71	71		2	211	211	11	11			
16,2	17,5	1	163	299	163	28	20	1	78	300	78	0	43		
		2	259	259	67	67		2	220	220	8	8			
20,7	20,0	1	173	319	173	26	21	1	88	319	88	0	54		
		2	276	276	69	69		2	237	237	11	11			
25,2	22,5	1	182	341	182	23	22	1	96	341	96	0	60		
		2	295	295	70	70		2	254	254	13	13			
29,7	25,0	1	192	365	192	18	23	1	103	365	103	0	65		
		2	315	315	69	69		2	291	291	62	62			
34,2	27,5	1	201	391	201	11	25	1	163	420	163	0	71		
		2	336	336	67	67		2	335	335	38	38			
38,7	45,0	1	248	457	248	40	26	1	203	527	203	0	76		
		2	396	396	101	101		2	420	420	47	47			
43,2	65,0	1	302	531	302	72	27	1	250	647	250	0	81		
		2	464	464	139	139		2	515	515	58	58			
47,7	85,0	1	355	609	355	101	28	1	289	781	289	0	87		
		2	534	534	175	175		2	616	616	64	64			
52,2	107,5	1	416	691	416	140	30	1	342	919	342	0	93		
		2	610	610	221	221		2	726	726	76	76			
56,7	132,5	1	483	782	483	184	31	1	400	1070	400	0	99		
		2	694	694	271	271		2	846	846	89	89			
61,2	152,5	1	543	863	543	224	34	1	444	1225	444	0	108		
		2	769	769	318	318		2	961	961	95	95			
65,7	180,0	1	619	965	619	274	36	1	506	1404	506	0	117		
		2	864	864	375	375		2	1101	1101	108	108			
70,2	210,0	1	701	1076	701	327	38	1	573	1599	573	0	124		
		2	966	966	437	437		2	1252	1252	121	121			
74,7	245,0	1	796	1202	796	390	40	1	654	1816	654	0	133		
		2	1083	1083	509	509		2	1423	1423	139	139			

3.2.6.5 Centerballasts and corner loads according to DIN 15019

for a stationary tower crane on a cross frame without climbing drive



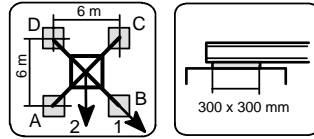
**KR 10 - 46** Corner distance 4,6 m x 4,6 m **jib 50 m**

hook height [m]	centerballast [t]	jib position	crane in service torque moment: 135 kNm					horizontal force [kN]	jib position	crane out of service torque moment: 0 kNm					horizontal force [kN]
			corner loads				horizontal force			corner loads				horizontal force	
			A [kN]	B [kN]	C [kN]	D [kN]				A [kN]	B [kN]	C [kN]	D [kN]		
11,7	27,5	1	191	318	191	65	18	1	98	353	98	0	39		
		2	281	281	102	102		2	262	262	12	12			
16,2	27,5	1	195	331	195	58	20	1	96	370	96	0	43		
		2	291	291	98	98		2	271	271	10	10			
20,7	30,0	1	204	352	204	57	21	1	105	390	105	0	55		
		2	309	309	100	100		2	288	288	12	12			
25,2	32,5	1	214	374	214	53	22	1	113	412	113	0	60		
		2	327	327	100	100		2	305	305	14	14			
29,7	35,0	1	223	398	223	48	23	1	119	438	119	0	65		
		2	347	347	100	100		2	331	331	86	86			
34,2	37,5	1	233	425	233	41	25	1	124	466	124	0	71		
		2	368	368	97	97		2	375	375	61	61			
38,7	47,5	1	261	472	261	50	26	1	216	553	216	0	76		
		2	410	410	112	112		2	442	442	51	51			
43,2	65,0	1	308	541	308	75	27	1	249	675	249	0	82		
		2	473	473	144	144		2	532	532	54	54			
47,7	87,5	1	368	625	368	110	28	1	299	813	299	0	87		
		2	550	550	185	185		2	640	640	65	65			
52,2	110,0	1	428	708	428	149	30	1	351	953	351	0	93		
		2	626	626	231	231		2	750	750	77	77			
56,7	135,0	1	496	800	496	191	31	1	408	1107	408	0	100		
		2	711	711	280	280		2	872	872	89	89			
61,2	157,5	1	562	887	562	238	34	1	464	1262	464	0	109		
		2	792	792	333	333		2	994	994	101	101			
65,7	185,0	1	638	989	638	287	36	1	524	1444	524	0	117		
		2	887	887	390	390		2	1134	1134	113	113			
70,2	215,0	1	720	1101	720	340	38	1	589	1642	589	0	125		
		2	989	989	451	451		2	1286	1286	125	125			
74,7	250,0	1	815	1228	815	402	40	1	668	1863	668	0	133		
		2	1107	1107	523	523		2	1459	1459	141	141			



3.2.7.1 Centerballasts and corner loads according to DIN 15019

for a stationary tower crane on a cross frame without climbing drive

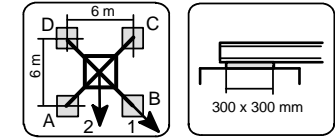


**KR 10 - 60** Corner distance 6 m x 6 m **jib 30 m**

hook height [m]	centerballast [t]	jib position	crane in service torque moment: 135 kNm					horizontal force [kN]	jib position	crane out of service torque moment: 0 kNm					horizontal force [kN]
			corner loads				horizontal force			corner loads				horizontal force	
			A [kN]	B [kN]	C [kN]	D [kN]				A [kN]	B [kN]	C [kN]	D [kN]		
11,7	10,0	1	130	234	130	26	18	1	78	149	78	8	38		
		2	203	203	56	56		2	128	128	28	28			
16,2	10,0	1	133	244	133	22	19	1	81	157	81	6	42		
		2	211	211	54	54		2	135	135	28	28			
20,7	10,0	1	136	255	136	17	21	1	85	166	85	3	53		
		2	221	221	52	52		2	148	148	94	94			
25,2	10,0	1	139	268	139	11	22	1	124	191	124	57	59		
		2	230	230	48	48		2	172	172	77	77			
29,7	10,0	1	143	282	143	3	23	1	128	226	128	29	64		
		2	241	241	44	44		2	198	198	58	58			
34,2	17,5	1	165	316	165	13	24	1	150	284	150	15	70		
		2	272	272	58	58		2	245	245	55	55			
38,7	27,5	1	193	358	193	28	26	1	178	352	178	4	75		
		2	310	310	76	76		2	301	301	55	55			
43,2	35,0	1	215	395	215	35	27	1	183	434	183	0	81		
		2	343	343	87	87		2	354	354	46	46			
47,7	47,5	1	250	447	250	52	28	1	203	531	203	0	86		
		2	389	389	110	110		2	422	422	47	47			
52,2	65,0	1	298	511	298	84	30	1	249	633	249	0	92		
		2	449	449	147	147		2	506	506	59	59			
56,7	80,0	1	340	571	340	109	31	1	278	744	278	0	99		
		2	503	503	177	177		2	588	588	62	62			
61,2	97,5	1	394	640	394	148	34	1	328	861	328	0	107		
		2	568	568	220	220		2	683	683	75	75			
65,7	117,5	1	451	717	451	186	36	1	376	993	376	0	116		
		2	639	639	264	264		2	788	788	85	85			
70,2	137,5	1	508	795	508	222	38	1	418	1137	418	0	124		
		2	711	711	306	306		2	895	895	91	91			
74,7	162,5	1	578	888	578	268	40	1	477	1297	477	0	132		
		2	797	797	359	359		2	1021	1021	104	104			

3.2.7.2 Centerballasts and corner loads according to DIN 15019

for a stationary tower crane on a cross frame without climbing drive

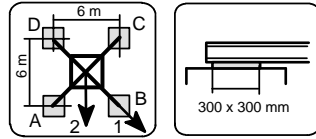


**KR 10 - 60** Corner distance 6 m x 6 m **jib 36 m**

hook height [m]	centerballast [t]	jib position	crane in service torque moment: 135 kNm					horizontal force [kN]	jib position	crane out of service torque moment: 0 kNm					horizontal force [kN]
			corner loads				horizontal force			corner loads				horizontal force	
			A [kN]	B [kN]	C [kN]	D [kN]				A [kN]	B [kN]	C [kN]	D [kN]		
11,7	7,5	1	124	225	124	24	18	1	72	143	72	1	38		
		2	195	195	53	53		2	125	125	49	49			
16,2	7,5	1	128	235	128	20	20	1	74	152	74	0	42		
		2	204	204	51	51		2	132	132	48	48			
20,7	7,5	1	131	247	131	15	21	1	116	165	116	67	54		
		2	213	213	49	49		2	151	151	81	81			
25,2	7,5	1	134	260	134	9	22	1	119	197	119	41	59		
		2	223	223	45	45		2	174	174	64	64			
29,7	7,5	1	137	274	137	1	23	1	122	232	122	12	65		
		2	234	234	41	41		2	200	200	44	44			
34,2	15,0	1	159	308	159	11	24	1	143	292	143	0	70		
		2	264	264	55	55		2	248	248	41	41			
38,7	22,5	1	181	343	181	20	26	1	147	371	147	0	75		
		2	296	296	67	67		2	298	298	35	35			
43,2	37,5	1	222	399	222	45	27	1	184	460	184	0	81		
		2	347	347	97	97		2	370	370	45	45			
47,7	52,5	1	263	457	263	68	28	1	217	558	217	0	86		
		2	401	401	125	125		2	445	445	51	51			
52,2	67,5	1	305	515	305	95	30	1	250	660	250	0	92		
		2	454	454	156	156		2	523	523	57	57			
56,7	85,0	1	353	581	353	126	31	1	290	772	290	0	99		
		2	514	514	192	192		2	611	611	65	65			
61,2	100,0	1	401	644	401	158	34	1	328	889	328	0	108		
		2	573	573	230	230		2	701	701	72	72			
65,7	120,0	1	458	721	458	196	36	1	375	1023	375	0	116		
		2	644	644	273	273		2	805	805	82	82			
70,2	142,5	1	522	805	522	238	38	1	430	1168	430	0	124		
		2	722	722	321	321		2	920	920	94	94			
74,7	167,5	1	591	898	591	285	40	1	488	1329	488	0	133		
		2	808	808	375	375		2	1046	1046	107	107			

3.2.7.3 Centerballasts and corner loads according to DIN 15019

for a stationary tower crane on a cross frame without climbing drive

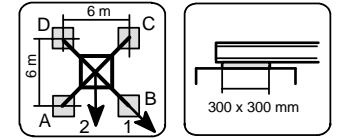


**KR 10 - 60** Corner distance 6 m x 6 m **jib 42 m**

hook height [m]	centerballast [t]	jib position	crane in service torque moment: 135 kNm					horizontal force [kN]	jib position	crane out of service torque moment: 0 kNm					horizontal force [kN]
			corner loads				horizontal force			corner loads				horizontal force	
			A [kN]	B [kN]	C [kN]	D [kN]				A [kN]	B [kN]	C [kN]	D [kN]		
11,7	2,5	1	122	219	122	25	18	1	69	167	69	0	39		
		2	191	191	53	53		2	135	135	17	17			
16,2	2,5	1	125	230	125	21	20	1	69	180	69	0	43		
		2	199	199	51	51		2	143	143	16	16			
20,7	2,5	1	128	241	128	16	21	1	68	194	68	0	54		
		2	208	208	49	49		2	152	152	75	75			
25,2	2,5	1	132	254	132	9	22	1	67	210	67	0	60		
		2	218	218	45	45		2	175	175	58	58			
29,7	5,0	1	141	275	141	8	23	1	126	242	126	11	65		
		2	236	236	47	47		2	208	208	45	45			
34,2	10,0	1	157	303	157	11	25	1	132	304	132	0	70		
		2	260	260	54	54		2	250	250	35	35			
38,7	20,0	1	185	345	185	26	26	1	148	385	148	0	76		
		2	298	298	72	72		2	307	307	34	34			
43,2	35,0	1	226	402	226	50	27	1	184	476	184	0	81		
		2	350	350	102	102		2	379	379	43	43			
47,7	50,0	1	267	461	267	73	28	1	215	577	215	0	87		
		2	404	404	130	130		2	456	456	48	48			
52,2	67,5	1	315	525	315	105	30	1	260	681	260	0	93		
		2	464	464	167	167		2	541	541	59	59			
56,7	85,0	1	363	592	363	135	31	1	299	796	299	0	99		
		2	525	525	202	202		2	630	630	67	67			
61,2	100,0	1	412	655	412	168	34	1	336	914	336	0	108		
		2	584	584	239	239		2	720	720	73	73			
65,7	120,0	1	469	732	469	205	36	1	382	1050	382	0	116		
		2	655	655	282	282		2	825	825	82	82			
70,2	142,5	1	532	817	532	247	38	1	435	1198	435	0	124		
		2	734	734	330	330		2	941	941	93	93			
74,7	167,5	1	602	911	602	293	40	1	492	1363	492	0	133		
		2	820	820	383	383		2	1068	1068	105	105			

3.2.7.4 Centerballasts and corner loads according to DIN 15019

for a stationary tower crane on a cross frame without climbing drive



**KR 10 - 60** Corner distance 6 m x 6 m **jib 46 m**

hook height [m]	centerballast [t]	jib position	crane in service torque moment: 135 kNm					horizontal force [kN]	jib position	crane out of service torque moment: 0 kNm					horizontal force [kN]
			corner loads				horizontal force			corner loads				horizontal force	
			A [kN]	B [kN]	C [kN]	D [kN]				A [kN]	B [kN]	C [kN]	D [kN]		
11,7	5,0	1	133	229	133	36	18	1	59	217	59	0	39		
		2	201	201	64	64		2	160	160	7	7			
16,2	5,0	1	136	240	136	32	20	1	59	230	59	0	43		
		2	209	209	62	62		2	168	168	6	6			
20,7	7,5	1	146	258	146	33	21	1	71	245	71	0	54		
		2	225	225	66	66		2	183	183	10	10			
25,2	7,5	1	149	271	149	27	22	1	69	261	69	0	60		
		2	235	235	62	62		2	198	198	69	69			
29,7	10,0	1	158	291	158	25	23	1	79	280	79	0	65		
		2	252	252	64	64		2	231	231	56	56			
34,2	10,0	1	162	307	162	16	25	1	132	322	132	0	71		
		2	265	265	59	59		2	260	260	33	33			
38,7	22,5	1	196	356	196	36	26	1	160	404	160	0	76		
		2	309	309	83	83		2	324	324	38	38			
43,2	37,5	1	237	413	237	61	27	1	196	496	196	0	81		
		2	361	361	112	112		2	397	397	46	46			
47,7	52,5	1	278	472	278	83	28	1	226	599	226	0	87		
		2	415	415	140	140		2	474	474	51	51			
52,2	67,5	1	320	531	320	109	30	1	257	704	257	0	93		
		2	469	469	170	170		2	554	554	56	56			
56,7	87,5	1	374	604	374	145	31	1	308	821	308	0	99		
		2	536	536	212	212		2	649	649	69	69			
61,2	102,5	1	422	667	422	178	34	1	345	939	345	0	108		
		2	595	595	249	249		2	739	739	75	75			
65,7	122,5	1	479	744	479	215	36	1	391	1077	391	0	117		
		2	667	667	292	292		2	845	845	84	84			
70,2	145,0	1	543	830	543	256	38	1	443	1226	443	0	124		
		2	746	746	340	340		2	961	961	94	94			
74,7	170,0	1	612	923	612	301	40	1	499	1392	499	0	133		
		2	832	832	392	392		2	1090	1090	105	105			

































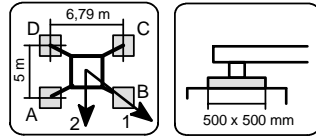






3.3.6.4 Centerballasts and corner loads according to DIN 15019

for a stationary tower crane on a cross frame element without climbing drive

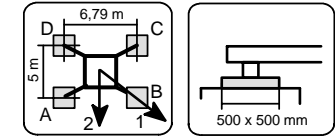


**KRE 260.2** Corner distance 5 m x 6,79 m **jib 46 m**

hook height [m]	centerballast [t]	jib position	crane in service torque moment: 135 kNm					horizontal force [kN]	crane out of service torque moment: 0 kNm					horizontal force [kN]
			corner loads				jib position		corner loads				jib position	
			A [kN]	B [kN]	C [kN]	D [kN]			A [kN]	B [kN]	C [kN]	D [kN]		
14,5	12,5	1	188	264	124	48	21	1	130	240	59	0	45	
		2	243	243	69	69		2	204	204	11	11		
19,0	12,5	1	194	276	125	44	22	1	132	255	56	0	57	
		2	253	253	66	66		2	213	213	8	8		
23,5	15,0	1	206	294	132	44	23	1	145	271	65	0	61	
		2	270	270	68	68		2	229	229	11	11		
28,0	15,0	1	213	308	132	36	25	1	145	289	59	0	66	
		2	282	282	63	63		2	253	253	62	62		
32,5	17,5	1	226	330	138	34	26	1	213	322	121	12	72	
		2	301	301	63	63		2	292	292	42	42		
37,0	30,0	1	264	378	168	55	27	1	260	397	143	6	77	
		2	347	347	86	86		2	359	359	44	44		
41,5	45,0	1	310	435	205	80	28	1	314	483	171	1	83	
		2	400	400	114	114		2	436	436	48	48		
46,0	62,5	1	362	499	246	109	30	1	373	583	200	0	88	
		2	461	461	147	147		2	524	524	54	54		
50,5	85,0	1	428	579	300	149	31	1	452	697	245	1	93	
		2	537	537	191	191		2	629	629	68	68		
55,0	105,0	1	488	652	349	185	32	1	521	813	280	0	100	
		2	606	606	231	231		2	730	730	76	76		
59,5	127,5	1	554	732	404	226	34	1	598	940	319	0	106	
		2	683	683	275	275		2	843	843	86	86		

3.3.6.5 Centerballasts and corner loads according to DIN 15019

for a stationary tower crane on a cross frame element without climbing drive

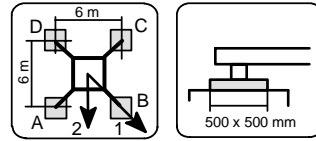


**KRE 260.2** Corner distance 5 m x 6,79 m **jib 50 m**

hook height [m]	centerballast [t]	jib position	crane in service torque moment: 135 kNm					horizontal force [kN]	crane out of service torque moment: 0 kNm					horizontal force [kN]
			corner loads				jib position		corner loads				jib position	
			A [kN]	B [kN]	C [kN]	D [kN]			A [kN]	B [kN]	C [kN]	D [kN]		
14,5	20,0	1	215	291	150	74	21	1	152	296	65	0	46	
		2	270	270	95	95		2	248	248	9	9		
19,0	22,5	1	227	309	158	76	22	1	166	311	74	0	58	
		2	286	286	98	98		2	263	263	13	13		
23,5	22,5	1	233	321	158	69	24	1	167	328	70	0	62	
		2	297	297	94	94		2	273	273	9	9		
28,0	25,0	1	246	342	164	68	25	1	179	347	76	0	67	
		2	315	315	95	95		2	292	292	88	88		
32,5	27,5	1	259	364	170	65	26	1	191	368	82	0	72	
		2	335	335	94	94		2	331	331	68	68		
37,0	30,0	1	272	387	176	61	27	1	270	414	148	4	78	
		2	355	355	93	93		2	374	374	44	44		
41,5	45,0	1	318	444	212	86	29	1	323	502	174	0	83	
		2	409	409	121	121		2	452	452	48	48		
46,0	62,5	1	371	509	255	117	30	1	384	603	205	0	89	
		2	471	471	155	155		2	541	541	55	55		
50,5	82,5	1	431	581	305	155	32	1	455	713	243	0	96	
		2	540	540	196	196		2	640	640	66	66		
55,0	105,0	1	498	662	359	194	33	1	533	836	285	0	102	
		2	617	617	240	240		2	750	750	77	77		
59,5	127,5	1	565	743	414	235	35	1	609	965	322	0	108	
		2	694	694	284	284		2	863	863	86	86		

3.3.7.1 Centerballasts and corner loads according to DIN 15019

for a stationary tower crane on a cross frame element without climbing drive

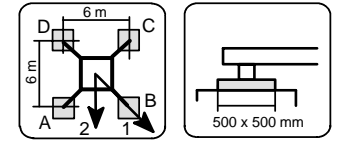


**KRE 260.2** Corner distance 6 m x 6 m **jib 30 m**

hook height [m]	centerballast [t]	jib position	crane in service torque moment: 135 kNm					horizontal force [kN]	jib position	crane out of service torque moment: 0 kNm					horizontal force [kN]
			corner loads				horizontal force [kN]			corner loads				horizontal force [kN]	
			A [kN]	B [kN]	C [kN]	D [kN]				A [kN]	B [kN]	C [kN]	D [kN]		
14,5	7,5	1	129	239	129	20	21	1	78	153	78	3	45		
		2	207	207	52	52		2	131	131	25	25			
19,0	7,5	1	133	250	133	15	22	1	81	162	81	0	56		
		2	215	215	50	50		2	141	141	94	94			
23,5	7,5	1	136	262	136	10	23	1	121	178	121	63	60		
		2	225	225	47	47		2	161	161	80	80			
28,0	7,5	1	139	275	139	3	25	1	124	212	124	37	66		
		2	235	235	43	43		2	186	186	62	62			
32,5	15,0	1	161	308	161	14	26	1	146	267	146	25	71		
		2	265	265	57	57		2	232	232	60	60			
37,0	22,5	1	183	342	183	24	27	1	168	326	168	10	77		
		2	296	296	71	71		2	280	280	56	56			
41,5	30,0	1	205	378	205	32	28	1	181	399	181	0	82		
		2	327	327	83	83		2	331	331	49	49			
46,0	40,0	1	235	422	235	47	30	1	194	489	194	0	88		
		2	367	367	102	102		2	393	393	47	47			
50,5	55,0	1	277	480	277	73	31	1	230	589	230	0	95		
		2	421	421	133	133		2	470	470	54	54			
55,0	72,5	1	325	547	325	103	33	1	272	697	272	0	100		
		2	482	482	168	168		2	556	556	64	64			
59,5	90,0	1	373	613	373	134	34	1	310	813	310	0	107		
		2	543	543	204	204		2	646	646	71	71			
64,0	107,5	1	424	682	424	166	36	1	349	939	349	0	115		
		2	606	606	242	242		2	741	741	77	77			
68,5	130,0	1	487	765	487	210	38	1	406	1077	406	0	123		
		2	684	684	291	291		2	853	853	91	91			

3.3.7.2 Centerballasts and corner loads according to DIN 15019

for a stationary tower crane on a cross frame element without climbing drive

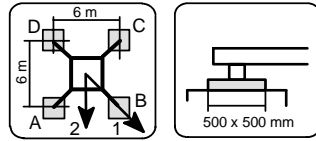


**KRE 260.2** Corner distance 6 m x 6 m **jib 36 m**

hook height [m]	centerballast [t]	jib position	crane in service torque moment: 135 kNm					horizontal force [kN]	jib position	crane out of service torque moment: 0 kNm					horizontal force [kN]
			corner loads				horizontal force [kN]			corner loads				horizontal force [kN]	
			A [kN]	B [kN]	C [kN]	D [kN]				A [kN]	B [kN]	C [kN]	D [kN]		
14,5	5,0	1	124	230	124	18	21	1	68	151	68	0	45		
		2	199	199	49	49		2	128	128	45	45			
19,0	5,0	1	127	241	127	13	22	1	69	162	69	0	57		
		2	208	208	47	47		2	143	143	81	81			
23,5	5,0	1	130	253	130	8	24	1	115	184	115	47	61		
		2	217	217	44	44		2	164	164	67	67			
28,0	5,0	1	134	266	134	1	25	1	119	217	119	20	66		
		2	227	227	40	40		2	188	188	49	49			
32,5	10,0	1	150	293	150	6	26	1	135	267	135	2	72		
		2	251	251	48	48		2	228	228	41	41			
37,0	17,5	1	172	327	172	16	27	1	143	340	143	0	77		
		2	282	282	61	61		2	277	277	36	36			
41,5	30,0	1	206	376	206	36	28	1	171	423	171	0	82		
		2	326	326	86	86		2	341	341	41	41			
46,0	42,5	1	242	427	242	57	30	1	196	515	196	0	88		
		2	372	372	111	111		2	409	409	45	45			
50,5	57,5	1	284	484	284	84	32	1	231	615	231	0	95		
		2	426	426	142	142		2	486	486	52	52			
55,0	75,0	1	332	551	332	114	33	1	272	724	272	0	101		
		2	487	487	178	178		2	573	573	61	61			
59,5	92,5	1	380	617	380	144	34	1	310	841	310	0	107		
		2	547	547	213	213		2	663	663	68	68			
64,0	112,5	1	438	692	438	183	36	1	361	968	361	0	115		
		2	618	618	257	257		2	765	765	80	80			
68,5	132,5	1	495	769	495	220	38	1	405	1108	405	0	123		
		2	689	689	300	300		2	871	871	88	88			

3.3.7.3 Centerballasts and corner loads according to DIN 15019

for a stationary tower crane on a cross frame element without climbing drive

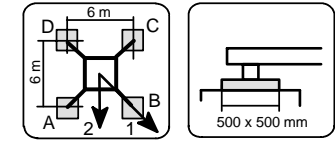


**KRE 260.2** Corner distance 6 m x 6 m **jib 42 m**

hook height [m]	centerballast [t]	jib position	crane in service torque moment: 135 kNm					horizontal force [kN]	jib position	crane out of service torque moment: 0 kNm					horizontal force [kN]
			corner loads				horizontal force [kN]			corner loads				horizontal force [kN]	
			A [kN]	B [kN]	C [kN]	D [kN]				A [kN]	B [kN]	C [kN]	D [kN]		
14,5	0,0	1	122	224	122	19	21	1	63	178	63	0	46		
		2	194	194	49	49		2	139	139	13	13			
19,0	0,0	1	125	235	125	14	22	1	63	191	63	0	57		
		2	203	203	47	47		2	147	147	12	12			
23,5	0,0	1	128	248	128	9	24	1	62	206	62	0	61		
		2	213	213	44	44		2	165	165	62	62			
28,0	2,5	1	138	267	138	8	25	1	123	226	123	19	67		
		2	229	229	46	46		2	196	196	49	49			
32,5	7,5	1	153	294	153	13	26	1	138	276	138	0	72		
		2	253	253	54	54		2	236	236	41	41			
37,0	15,0	1	175	329	175	22	27	1	145	352	145	0	77		
		2	284	284	67	67		2	285	285	36	36			
41,5	27,5	1	210	378	210	42	29	1	171	437	171	0	83		
		2	329	329	91	91		2	350	350	40	40			
46,0	42,5	1	252	435	252	69	30	1	208	531	208	0	89		
		2	382	382	122	122		2	425	425	49	49			
50,5	57,5	1	294	494	294	95	32	1	242	633	242	0	95		
		2	435	435	153	153		2	503	503	56	56			
55,0	75,0	1	342	560	342	124	33	1	282	745	282	0	101		
		2	497	497	188	188		2	591	591	64	64			
59,5	92,5	1	391	627	391	154	34	1	319	864	319	0	108		
		2	558	558	223	223		2	681	681	70	70			
64,0	112,5	1	448	703	448	192	36	1	369	993	369	0	116		
		2	628	628	267	267		2	784	784	82	82			
68,5	132,5	1	505	781	505	229	38	1	412	1136	412	0	124		
		2	700	700	310	310		2	891	891	88	88			

3.3.7.4 Centerballasts and corner loads according to DIN 15019

for a stationary tower crane on a cross frame element without climbing drive



**KRE 260.2** Corner distance 6 m x 6 m **jib 46 m**

hook height [m]	centerballast [t]	jib position	crane in service torque moment: 135 kNm					horizontal force [kN]	jib position	crane out of service torque moment: 0 kNm					horizontal force [kN]
			corner loads				horizontal force [kN]			corner loads				horizontal force [kN]	
			A [kN]	B [kN]	C [kN]	D [kN]				A [kN]	B [kN]	C [kN]	D [kN]		
14,5	5,0	1	138	240	138	35	21	1	63	228	63	0	45		
		2	210	210	65	65		2	169	169	8	8			
19,0	5,0	1	141	251	141	31	22	1	63	242	63	0	57		
		2	219	219	63	63		2	177	177	6	6			
23,5	7,5	1	150	269	150	31	23	1	74	257	74	0	61		
		2	234	234	66	66		2	193	193	78	78			
28,0	7,5	1	154	283	154	25	25	1	72	275	72	0	66		
		2	245	245	62	62		2	218	218	59	59			
32,5	10,0	1	163	304	163	23	26	1	148	295	148	1	72		
		2	263	263	64	64		2	252	252	44	44			
37,0	15,0	1	179	332	179	25	27	1	142	372	142	0	77		
		2	288	288	70	70		2	295	295	33	33			
41,5	30,0	1	220	388	220	51	28	1	181	458	181	0	83		
		2	339	339	101	101		2	367	367	43	43			
46,0	45,0	1	260	446	260	75	30	1	214	554	214	0	88		
		2	391	391	130	130		2	441	441	50	50			
50,5	60,0	1	301	505	301	97	31	1	242	661	242	0	93		
		2	446	446	157	157		2	520	520	53	53			
55,0	77,5	1	350	571	350	128	32	1	284	771	284	0	100		
		2	506	506	193	193		2	607	607	62	62			
59,5	97,5	1	404	644	404	164	34	1	332	892	332	0	106		
		2	574	574	234	234		2	704	704	74	74			
64,0	115,0	1	458	715	458	202	36	1	378	1018	378	0	116		
		2	640	640	277	277		2	804	804	83	83			
68,5	135,0	1	516	793	516	238	38	1	420	1162	420	0	124		
		2	712	712	319	319		2	911	911	90	90			



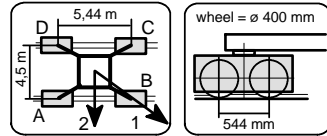






3.4.2.1 Centerballasts and corner loads according to DIN 15019

for a travelling tower crane on  
an undercarriage without climbing drive

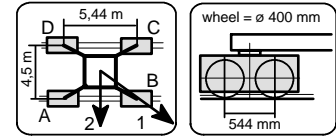


**UW 250** Corner distance 4,5 m x 5,44 m **jib 30 m**

hook height [m]	centerballast [t]	jib position	crane in service torque moment: 135 kNm corner loads				horizontal force [kN]	jib position	crane out of service torque moment: 0 kNm corner loads				horizontal force [kN]
			A	B	C	D			A	B	C	D	
			[kN]	[kN]	[kN]	[kN]			[kN]	[kN]	[kN]	[kN]	
15,0	30,0	1	203	312	152	43	19	1	143	218	109	34	41
		2	281	281	74	74		2	197	197	55	55	
19,5	30,0	1	208	325	154	37	20	1	148	229	111	30	53
		2	292	292	70	70		2	206	206	53	53	
24,0	30,0	1	213	339	155	29	22	1	183	246	155	93	58
		2	304	304	64	64		2	228	228	110	110	
28,5	32,5	1	225	361	162	26	23	1	200	293	157	65	63
		2	323	323	64	64		2	266	266	91	91	
33,0	40,0	1	250	398	182	34	24	1	230	357	171	45	69
		2	356	356	76	76		2	321	321	81	81	
37,5	52,5	1	287	448	213	52	25	1	273	438	197	33	74
		2	403	403	98	98		2	391	391	79	79	

3.4.2.2 Centerballasts and corner loads according to DIN 15019

for a travelling tower crane on  
an undercarriage without climbing drive



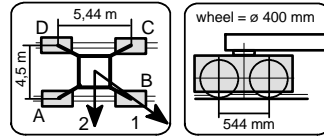
**UW 250** Corner distance 4,5 m x 5,44 m **jib 36 m**

hook height [m]	centerballast [t]	jib position	crane in service torque moment: 135 kNm corner loads				horizontal force [kN]	jib position	crane out of service torque moment: 0 kNm corner loads				horizontal force [kN]
			A	B	C	D			A	B	C	D	
			[kN]	[kN]	[kN]	[kN]			[kN]	[kN]	[kN]	[kN]	
15,0	27,5	1	197	303	148	42	19	1	137	212	103	28	42
		2	273	273	72	72		2	191	191	49	49	
19,5	27,5	1	202	316	149	35	21	1	142	223	105	24	53
		2	284	284	67	67		2	203	203	118	118	
24,0	27,5	1	207	330	150	27	22	1	181	253	147	74	58
		2	295	295	62	62		2	233	233	95	95	
28,5	27,5	1	213	346	151	18	23	1	191	295	143	39	64
		2	308	308	56	56		2	265	265	69	69	
33,0	37,5	1	244	388	177	32	24	1	227	365	164	25	69
		2	348	348	73	73		2	326	326	64	64	
37,5	47,5	1	275	433	202	45	26	1	263	442	182	8	75
		2	388	388	89	89		2	391	391	56	56	



3.4.2.5 Centerballasts and corner loads according to DIN 15019

for a travelling tower crane on  
an undercarriage without climbing drive

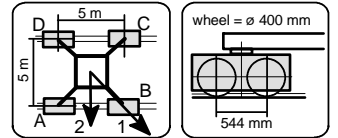


**UW 250** Corner distance 4,5 m x 5,44 m **jib 50 m**

hook height [m]	centerballast [t]	jib position	crane in service torque moment: 135 kNm corner loads				horizontal force [kN]	jib position	crane out of service torque moment: 0 kNm corner loads				horizontal force [kN]
			A	B	C	D			A	B	C	D	
			[kN]	[kN]	[kN]	[kN]			[kN]	[kN]	[kN]	[kN]	
15,0	32,5	1	230	332	182	80	19	1	156	353	91	8	42
		2	303	303	109	109	2	285	285	19	19		
19,5	35,0	1	241	352	190	79	21	1	167	370	99	8	54
		2	321	321	110	110	2	301	301	22	22		
24,0	37,5	1	253	373	197	77	22	1	178	390	107	8	59
		2	339	339	111	111	2	318	318	23	23		
28,5	40,0	1	265	396	204	73	23	1	188	413	112	8	65
		2	359	359	110	110	2	339	339	100	100		
33,0	42,5	1	277	420	211	68	24	1	197	439	116	8	70
		2	380	380	108	108	2	382	382	76	76		
37,5	47,5	1	296	453	224	67	26	1	281	503	188	8	76
		2	409	409	111	111	2	436	436	54	54		

3.4.3.1 Centerballasts and corner loads according to DIN 15019

for a travelling tower crane on  
an undercarriage without climbing drive

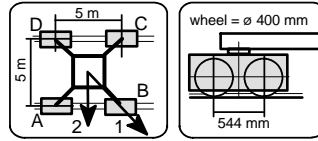


**UW 250** Corner distance 5,0 m x 5,0 m **jib 30 m**

hook height [m]	centerballast [t]	jib position	crane in service torque moment: 135 kNm corner loads				horizontal force [kN]	jib position	crane out of service torque moment: 0 kNm corner loads				horizontal force [kN]
			A	B	C	D			A	B	C	D	
			[kN]	[kN]	[kN]	[kN]			[kN]	[kN]	[kN]	[kN]	
15,0	25,0	1	165	297	165	33	19	1	114	204	114	23	41
		2	258	258	72	72	2	178	178	50	50		
19,5	25,0	1	168	310	168	27	20	1	117	214	117	20	53
		2	268	268	68	68	2	186	186	48	48		
24,0	25,0	1	172	324	172	19	22	1	157	232	157	82	58
		2	279	279	64	64	2	210	210	104	104		
28,5	25,0	1	175	339	175	10	23	1	160	272	160	48	63
		2	291	291	59	59	2	239	239	81	81		
33,0	32,5	1	197	375	197	19	24	1	182	335	182	29	69
		2	323	323	71	71	2	290	290	74	74		
37,5	42,5	1	225	419	225	31	25	1	210	409	210	12	74
		2	362	362	88	88	2	351	351	70	70		
42,0	55,0	1	260	471	260	48	27	1	233	506	233	8	80
		2	409	409	110	110	2	421	421	69	69		

3.4.3.2 Centerballasts and corner loads according to DIN 15019

for a travelling tower crane on  
an undercarriage without climbing drive

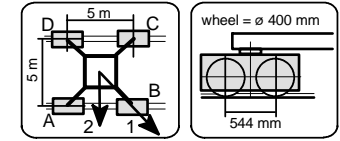


**UW 250** Corner distance 5,0 m x 5,0 m **jib 36 m**

hook height [m]	centerballast [t]	jib position	crane in service torque moment: 135 kNm				horizontal force [kN]	jib position	crane out of service torque moment: 0 kNm				horizontal force [kN]
			corner loads						corner loads				
			A [kN]	B [kN]	C [kN]	D [kN]			A [kN]	B [kN]	C [kN]	D [kN]	
15,0	22,5	1	160	288	160	32	19	1	107	198	107	17	42
		2	250	250	69	69	2	173	173	73	73		
19,5	22,5	1	163	301	163	25	21	1	111	208	111	13	53
		2	260	260	66	66	2	187	187	109	109		
24,0	22,5	1	166	315	166	18	22	1	151	239	151	63	58
		2	271	271	61	61	2	213	213	89	89		
28,5	22,5	1	170	330	170	9	23	1	155	280	155	29	64
		2	283	283	56	56	2	243	243	66	66		
33,0	30,0	1	192	366	192	17	24	1	177	343	177	10	69
		2	315	315	68	68	2	294	294	59	59		
37,5	40,0	1	220	410	220	30	26	1	189	433	189	8	75
		2	354	354	85	85	2	355	355	54	54		
42,0	55,0	1	261	469	261	53	27	1	220	536	220	8	80
		2	408	408	114	114	2	432	432	59	59		

3.4.3. Centerballasts and corner loads according to DIN 15019

for a travelling tower crane on  
an undercarriage without climbing drive

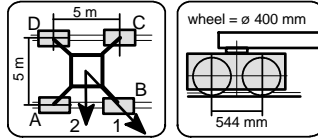


**UW 250** Corner distance 5,0 m x 5,0 m **jib 42 m**

hook height [m]	centerballast [t]	jib position	crane in service torque moment: 135 kNm				horizontal force [kN]	jib position	crane out of service torque moment: 0 kNm				horizontal force [kN]
			corner loads						corner loads				
			A [kN]	B [kN]	C [kN]	D [kN]			A [kN]	B [kN]	C [kN]	D [kN]	
15,0	17,5	1	157	282	157	33	19	1	109	221	109	8	42
		2	245	245	70	70	2	187	187	36	36		
19,5	17,5	1	161	294	161	27	21	1	107	238	107	8	53
		2	255	255	66	66	2	196	196	34	34		
24,0	17,5	1	164	309	164	19	22	1	104	257	104	8	59
		2	266	266	62	62	2	215	215	83	83		
28,5	17,5	1	167	325	167	10	23	1	152	284	152	21	64
		2	278	278	56	56	2	245	245	59	59		
33,0	25,0	1	189	361	189	18	24	1	167	355	167	8	70
		2	311	311	68	68	2	297	297	52	52		
37,5	35,0	1	218	405	218	30	26	1	177	449	177	8	75
		2	350	350	85	85	2	359	359	47	47		
42,0	52,5	1	265	470	265	59	27	1	219	554	219	8	81
		2	410	410	119	119	2	443	443	57	57		

3.4.3.4 Centerballasts and corner loads according to DIN 15019

for a travelling tower crane on  
an undercarriage without climbing drive

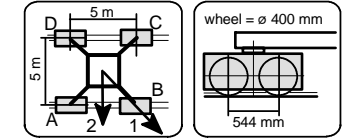


**UW 250**                      **Corner distance 5,0 m x 5,0 m**                      **jib 46 m**

hook height [m]	centerballast [t]	jib position	crane in service torque moment: 135 kNm corner loads				horizontal force [kN]	jib position	crane out of service torque moment: 0 kNm corner loads				horizontal force [kN]
			A [kN]	B [kN]	C [kN]	D [kN]			A [kN]	B [kN]	C [kN]	D [kN]	
15,0	17,5	1	162	285	162	39	19	1	81	282	81	8	42
		2	249	249	75	75		2	210	210	16	16	
19,5	20,0	1	172	305	172	38	21	1	92	299	92	8	54
		2	266	266	77	77		2	225	225	20	20	
24,0	20,0	1	175	319	175	31	22	1	89	318	89	8	59
		2	277	277	73	73		2	235	235	16	16	
28,5	22,5	1	184	341	184	28	23	1	97	339	97	8	64
		2	295	295	73	73		2	269	269	69	69	
33,0	25,0	1	194	365	194	23	24	1	166	376	166	8	70
		2	315	315	73	73		2	309	309	49	49	
37,5	37,5	1	228	416	228	41	26	1	187	471	187	8	75
		2	361	361	96	96		2	377	377	50	50	
42,0	55,0	1	275	481	275	69	27	1	228	577	228	8	81
		2	421	421	130	130		2	462	462	59	59	

3.4.3.5 Centerballasts and corner loads according to DIN 15019

for a travelling tower crane on  
an undercarriage without climbing drive

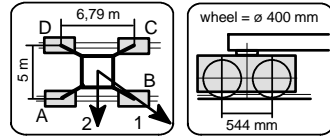


**UW 250**                      **Corner distance 5,0 m x 5,0 m**                      **jib 50 m**

hook height [m]	centerballast [t]	jib position	crane in service torque moment: 135 kNm corner loads				horizontal force [kN]	jib position	crane out of service torque moment: 0 kNm corner loads				horizontal force [kN]
			A [kN]	B [kN]	C [kN]	D [kN]			A [kN]	B [kN]	C [kN]	D [kN]	
15,0	27,5	1	193	317	193	69	19	1	102	346	102	8	42
		2	281	281	106	106		2	259	259	20	20	
19,5	27,5	1	197	331	197	63	21	1	99	363	99	8	54
		2	291	291	102	102		2	268	268	17	17	
24,0	30,0	1	206	351	206	61	22	1	109	383	109	8	59
		2	309	309	104	104		2	285	285	19	19	
28,5	32,5	1	216	374	216	58	23	1	117	405	117	8	65
		2	328	328	104	104		2	308	308	94	94	
33,0	35,0	1	225	398	225	53	24	1	123	430	123	8	70
		2	347	347	103	103		2	348	348	73	73	
37,5	37,5	1	235	424	235	45	26	1	189	494	189	8	76
		2	369	369	101	101		2	392	392	48	48	
42,0	55,0	1	282	490	282	73	27	1	229	602	229	8	81
		2	429	429	134	134		2	477	477	57	57	

3.4.4.1 Centerballasts and corner loads according to DIN 15019

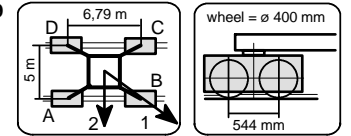
for a travelling tower crane on an undercarriage without climbing drive



<b>UW 260.1</b>		<b>Corner distance 5 m x 6,79 m</b>						<b>jib 30 m</b>					
hook height [m]	centerballast [t]	jib position	crane in service torque moment: 135 kNm				horizontal force [kN]	jib position	crane out of service torque moment: 0 kNm				horizontal force [kN]
			corner loads						corner loads				
		A		B		C		D					
		[kN]	[kN]	[kN]	[kN]	[kN]	[kN]	[kN]	[kN]	[kN]	[kN]		
15,0	20,0	1	195	277	126	44	21	1	133	189	86	29	45
		2	255	255	67	67		2	174	174	45	45	
19,5	20,0	1	201	289	127	39	22	1	138	199	87	26	56
		2	264	264	64	64		2	182	182	43	43	
24,0	20,0	1	207	301	127	33	23	1	172	220	132	85	62
		2	275	275	59	59		2	207	207	98	98	
28,5	22,5	1	220	321	134	32	25	1	191	262	132	62	67
		2	293	293	60	60		2	242	242	81	81	
33,0	30,0	1	245	355	152	42	26	1	224	319	144	48	72
		2	325	325	73	73		2	293	293	75	75	
37,5	40,0	1	277	397	177	57	27	1	264	387	160	37	78
		2	364	364	90	90		2	353	353	71	71	
42,0	50,0	1	310	440	201	71	28	1	305	459	175	21	83
		2	404	404	107	107		2	417	417	64	64	
46,5	65,0	1	356	498	236	95	30	1	361	549	202	14	89
		2	458	458	134	134		2	497	497	66	66	

3.4.4.2 Centerballasts and corner loads according to DIN 15019

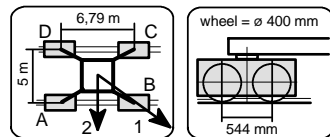
for a travelling tower crane on an undercarriage without climbing drive



<b>UW 260.1</b>		<b>Corner distance 5 m x 6,79 m</b>						<b>jib 36 m</b>					
hook height [m]	centerballast [t]	jib position	crane in service torque moment: 135 kNm				horizontal force [kN]	jib position	crane out of service torque moment: 0 kNm				horizontal force [kN]
			corner loads						corner loads				
		A		B		C		D					
		[kN]	[kN]	[kN]	[kN]	[kN]	[kN]	[kN]	[kN]	[kN]	[kN]		
15,0	17,5	1	189	269	122	42	21	1	127	183	79	23	45
		2	247	247	64	64		2	169	169	68	68	
19,5	17,5	1	195	280	123	37	22	1	158	193	129	94	56
		2	256	256	61	61		2	184	184	104	104	
24,0	17,5	1	201	293	123	31	23	1	170	226	124	68	62
		2	267	267	57	57		2	210	210	83	83	
28,5	17,5	1	207	306	123	24	25	1	183	262	117	39	67
		2	279	279	52	52		2	240	240	60	60	
33,0	27,5	1	239	347	148	40	26	1	222	326	135	31	73
		2	317	317	70	70		2	297	297	60	60	
37,5	37,5	1	271	388	172	55	27	1	262	394	151	19	78
		2	356	356	88	88		2	358	358	56	56	
42,0	50,0	1	310	438	202	75	29	1	310	473	172	9	84
		2	402	402	110	110		2	428	428	54	54	

3.4.4.3 Centerballasts and corner loads according to DIN 15019

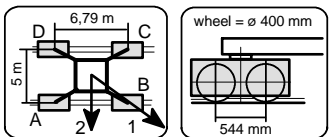
for a travelling tower crane on an undercarriage without climbing drive



UW 260.1		Corner distance 5 m x 6,79 m								jib 42 m			
hook height [m]	centerballast [t]	jib position	crane in service torque moment: 135 kNm				horizontal force [kN]	jib position	crane out of service torque moment: 0 kNm				horizontal force [kN]
			corner loads						corner loads				
			A [kN]	B [kN]	C [kN]	D [kN]			A [kN]	B [kN]	C [kN]	D [kN]	
15,0	12,5	1	186	263	121	43	21	1	135	202	79	13	45
		2	241	241	65	65		2	183	183	31	31	
19,5	12,5	1	191	274	121	38	22	1	141	212	80	9	57
		2	251	251	61	61		2	193	193	29	29	
24,0	12,5	1	197	287	122	32	24	1	170	229	120	61	62
		2	262	262	57	57		2	212	212	77	77	
28,5	15,0	1	210	307	128	31	25	1	189	271	119	37	68
		2	280	280	58	58		2	248	248	60	60	
33,0	22,5	1	236	341	147	41	26	1	222	330	131	23	73
		2	312	312	70	70		2	300	300	52	52	
37,5	32,5	1	268	383	171	56	27	1	262	399	147	10	79
		2	351	351	88	88		2	361	361	48	48	
42,0	50,0	1	320	446	213	87	29	1	323	491	180	12	84
		2	411	411	122	122		2	444	444	59	59	

3.4.4.4 Centerballasts and corner loads according to DIN 15019

for a travelling tower crane on an undercarriage without climbing drive

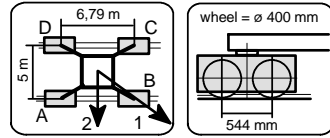


UW 260.1		Corner distance 5 m x 6,79 m								jib 46 m			
hook height [m]	centerballast [t]	jib position	crane in service torque moment: 135 kNm				horizontal force [kN]	jib position	crane out of service torque moment: 0 kNm				horizontal force [kN]
			corner loads						corner loads				
			A [kN]	B [kN]	C [kN]	D [kN]			A [kN]	B [kN]	C [kN]	D [kN]	
15,0	15,0	1	196	273	131	55	21	1	137	250	65	8	45
		2	252	252	76	76		2	212	212	17	17	
19,5	15,0	1	202	284	132	50	22	1	138	264	62	8	57
		2	262	262	73	73		2	221	221	15	15	
24,0	17,5	1	214	303	139	50	24	1	151	281	70	8	62
		2	279	279	75	75		2	238	238	18	18	
28,5	20,0	1	227	324	145	49	25	1	164	300	77	8	68
		2	297	297	75	75		2	272	272	70	70	
33,0	22,5	1	240	346	151	46	26	1	229	343	132	18	73
		2	316	316	75	75		2	312	312	50	50	
37,5	35,0	1	279	394	182	67	27	1	276	419	155	11	79
		2	362	362	98	98		2	379	379	51	51	
42,0	50,0	1	324	450	218	92	29	1	329	507	181	8	84
		2	415	415	127	127		2	457	457	55	55	



3.4.4.5 Centerballasts and corner loads according to DIN 15019

for a travelling tower crane on  
an undercarriage without climbing drive

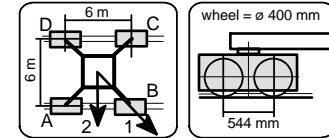


**UW 260.1** Corner distance 5 m x 6,79 m **jib 50 m**

hook height [m]	centerballast [t]	jib position	crane in service torque moment: 135 kNm corner loads				horizontal force [kN]	jib position	crane out of service torque moment: 0 kNm corner loads				horizontal force [kN]
			A	B	C	D			A	B	C	D	
			[kN]	[kN]	[kN]	[kN]			[kN]	[kN]	[kN]	[kN]	
15,0	25,0	1	228	305	163	86	21	1	170	306	81	8	46
		2	284	284	107	107	2	261	261	21	21		
19,5	25,0	1	234	317	164	81	22	1	171	321	78	8	57
		2	294	294	104	104	2	271	271	18	18		
24,0	27,5	1	246	336	170	81	24	1	184	338	86	8	63
		2	311	311	105	105	2	287	287	21	21		
28,5	30,0	1	259	356	177	79	25	1	196	357	92	8	68
		2	329	329	106	106	2	311	311	94	94		
33,0	30,0	1	266	372	176	70	26	1	195	379	85	8	74
		2	343	343	99	99	2	344	344	68	68		
37,5	35,0	1	286	402	188	71	27	1	285	435	158	8	79
		2	370	370	104	104	2	394	394	50	50		
42,0	52,5	1	338	465	230	102	29	1	346	529	192	9	84
		2	430	430	138	138	2	478	478	59	59		

3.4.5.1 Centerballasts and corner loads according to DIN 15019

for a travelling tower crane on  
an undercarriage without climbing drive

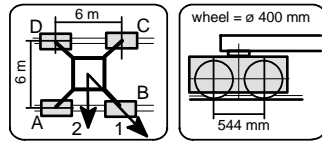


**UW 260.1** Corner distance 6 m x 6 m **jib 30 m**

hook height [m]	centerballast [t]	jib position	crane in service torque moment: 135 kNm corner loads				horizontal force [kN]	jib position	crane out of service torque moment: 0 kNm corner loads				horizontal force [kN]
			A	B	C	D			A	B	C	D	
			[kN]	[kN]	[kN]	[kN]			[kN]	[kN]	[kN]	[kN]	
15,0	10,0	1	136	246	136	25	21	1	84	160	84	8	45
		2	214	214	57	57	2	138	138	31	31		
19,5	10,0	1	139	257	139	21	22	1	86	171	86	8	56
		2	223	223	55	55	2	150	150	98	98		
24,0	10,0	1	142	269	142	15	23	1	127	191	127	63	62
		2	232	232	52	52	2	173	173	82	82		
28,5	12,5	1	152	289	152	15	25	1	137	231	137	42	67
		2	249	249	55	55	2	204	204	70	70		
33,0	17,5	1	168	316	168	19	26	1	153	281	153	24	72
		2	272	272	63	63	2	244	244	62	62		
37,5	27,5	1	196	357	196	35	27	1	181	347	181	15	78
		2	310	310	82	82	2	298	298	63	63		
42,0	35,0	1	218	393	218	43	28	1	190	423	190	8	83
		2	342	342	94	94	2	350	350	56	56		
46,5	47,5	1	252	444	252	61	30	1	213	515	213	8	89
		2	388	388	117	117	2	417	417	58	58		
51,0	62,5	1	293	503	293	84	31	1	244	617	244	8	94
		2	441	441	145	145	2	494	494	63	63		

3.4.5.2 Centerballasts and corner loads according to DIN 15019

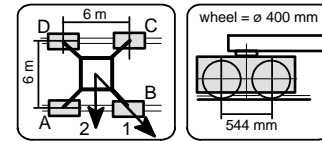
for a travelling tower crane on an undercarriage without climbing drive



UW 260.1		Corner distance 6 m x 6 m				jib 36 m							
hook height [m]	centerballast [t]	jib position	crane in service torque moment: 135 kNm corner loads				horizontal force [kN]	jib position	crane out of service torque moment: 0 kNm corner loads				horizontal force [kN]
			A [kN]	B [kN]	C [kN]	D [kN]			A [kN]	B [kN]	C [kN]	D [kN]	
15,0	10,0	1	137	244	137	29	21	1	84	160	84	8	45
		2	213	213	61	61		2	142	142	57	57	
19,5	10,0	1	140	255	140	25	22	1	125	172	125	78	56
		2	221	221	58	58		2	158	158	92	92	
24,0	10,0	1	143	267	143	19	23	1	128	203	128	53	62
		2	231	231	56	56		2	181	181	75	75	
28,5	10,0	1	146	280	146	12	25	1	131	237	131	26	67
		2	241	241	52	52		2	206	206	57	57	
33,0	15,0	1	162	307	162	17	26	1	147	288	147	8	73
		2	265	265	60	60		2	246	246	48	48	
37,5	22,5	1	184	342	184	26	27	1	153	364	153	8	78
		2	296	296	73	73		2	295	295	43	43	
42,0	35,0	1	219	391	219	47	29	1	180	448	180	8	84
		2	340	340	97	97		2	359	359	48	48	
46,5	50,0	1	260	448	260	71	30	1	215	541	215	8	89
		2	393	393	127	127		2	433	433	56	56	
51,0	65,0	1	300	507	300	94	31	1	245	644	245	8	94
		2	446	446	154	154		2	510	510	60	60	

3.4.5.3 Centerballasts and corner loads according to DIN 15019

for a travelling tower crane on an undercarriage without climbing drive

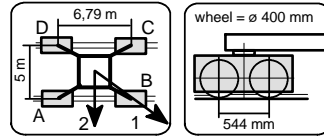


UW 260.1		Corner distance 6 m x 6 m				jib 42 m							
hook height [m]	centerballast [t]	jib position	crane in service torque moment: 135 kNm corner loads				horizontal force [kN]	jib position	crane out of service torque moment: 0 kNm corner loads				horizontal force [kN]
			A [kN]	B [kN]	C [kN]	D [kN]			A [kN]	B [kN]	C [kN]	D [kN]	
15,0	5,0	1	134	238	134	30	21	1	80	187	80	8	45
		2	208	208	61	61		2	152	152	25	25	
19,5	5,0	1	138	249	138	26	22	1	79	201	79	8	57
		2	217	217	58	58		2	160	160	24	24	
24,0	5,0	1	141	262	141	20	24	1	78	216	78	8	62
		2	226	226	55	55		2	182	182	70	70	
28,5	5,0	1	144	275	144	13	25	1	129	240	129	18	68
		2	237	237	52	52		2	208	208	51	51	
33,0	12,5	1	166	309	166	24	26	1	149	299	149	8	73
		2	267	267	65	65		2	254	254	48	48	
37,5	20,0	1	188	344	188	33	27	1	154	377	154	8	79
		2	298	298	78	78		2	304	304	43	43	
42,0	32,5	1	223	393	223	53	29	1	180	462	180	8	84
		2	343	343	102	102		2	368	368	47	47	
46,5	47,5	1	263	450	263	77	30	1	214	558	214	8	89
		2	396	396	131	131		2	443	443	54	54	
51,0	65,0	1	311	516	311	105	31	1	255	664	255	8	95
		2	456	456	165	165		2	527	527	64	64	



3.4.6.1 Centerballasts and corner loads according to DIN 15019

for a travelling tower crane on  
an undercarriage without climbing drive

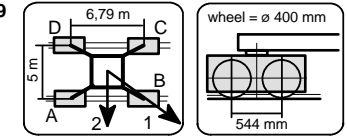


**UW 260.2** Corner distance 5 m x 6,79 m **jib 30 m**

hook height [m]	centerballast [t]	jib position	crane in service torque moment: 135 kNm					horizontal force [kN]	jib position	crane out of service torque moment: 0 kNm					horizontal force [kN]
			corner loads				horizontal force [kN]			corner loads				horizontal force [kN]	
			A [kN]	B [kN]	C [kN]	D [kN]				A [kN]	B [kN]	C [kN]	D [kN]		
15,0	17,5	1	197	279	127	45	21	1	134	191	87	30	45		
		2	256	256	68	68		2	175	175	46	46			
19,5	17,5	1	202	290	128	41	22	1	139	200	88	28	56		
		2	266	266	65	65		2	183	183	44	44			
24,0	17,5	1	208	302	129	35	24	1	174	221	134	86	62		
		2	276	276	61	61		2	208	208	99	99			
28,5	17,5	1	215	316	129	27	25	1	186	256	127	57	67		
		2	288	288	56	56		2	237	237	77	77			
33,0	27,5	1	246	356	154	44	26	1	225	320	145	50	73		
		2	326	326	74	74		2	294	294	76	76			
37,5	37,5	1	279	398	178	59	27	1	265	388	161	39	78		
		2	365	365	92	92		2	354	354	73	73			
42,0	47,5	1	311	441	202	72	29	1	306	460	177	23	84		
		2	405	405	108	108		2	418	418	66	66			
46,5	60,0	1	352	493	233	92	30	1	356	544	198	11	89		
		2	454	454	131	131		2	492	492	63	63			
51,0	80,0	1	412	564	283	130	32	1	427	652	237	13	96		
		2	522	522	172	172		2	589	589	75	75			
55,5	100,0	1	472	638	331	165	33	1	498	764	274	9	102		
		2	592	592	211	211		2	690	690	83	83			

3.4.6.2 Centerballasts and corner loads according to DIN 15019

for a travelling tower crane on  
an undercarriage without climbing drive

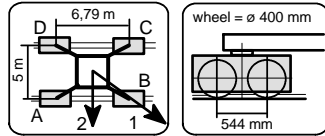


**UW 260.2** Corner distance 5 m x 6,79 m **jib 36 m**

hook height [m]	centerballast [t]	jib position	crane in service torque moment: 135 kNm					horizontal force [kN]	jib position	crane out of service torque moment: 0 kNm					horizontal force [kN]
			corner loads				horizontal force [kN]			corner loads				horizontal force [kN]	
			A [kN]	B [kN]	C [kN]	D [kN]				A [kN]	B [kN]	C [kN]	D [kN]		
15,0	15,0	1	190	270	123	43	21	1	128	185	80	24	45		
		2	248	248	65	65		2	170	170	69	69			
19,5	15,0	1	196	281	124	39	23	1	160	195	130	95	57		
		2	258	258	62	62		2	185	185	105	105			
24,0	15,0	1	202	294	124	33	24	1	172	227	125	70	62		
		2	268	268	58	58		2	212	212	85	85			
28,5	15,0	1	208	308	125	25	25	1	184	263	118	40	68		
		2	280	280	53	53		2	241	241	62	62			
33,0	22,5	1	234	341	143	36	26	1	217	321	130	26	73		
		2	312	312	65	65		2	292	292	55	55			
37,5	32,5	1	266	383	167	51	28	1	257	389	146	15	78		
		2	351	351	83	83		2	353	353	51	51			
42,0	47,5	1	311	439	204	76	29	1	311	474	174	11	84		
		2	403	403	112	112		2	429	429	56	56			
46,5	65,0	1	364	503	247	109	30	1	374	571	208	11	90		
		2	464	464	147	147		2	516	516	65	65			
51,0	82,5	1	418	568	291	141	32	1	437	674	239	8	97		
		2	526	526	182	182		2	608	608	71	71			
55,5	105,0	1	484	648	346	182	33	1	516	792	284	8	102		
		2	603	603	227	227		2	715	715	84	84			

3.4.6.3 Centerballasts and corner loads according to DIN 15019

for a travelling tower crane on  
an undercarriage without climbing drive

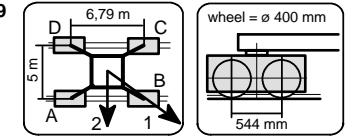


**UW 260.2** Corner distance 5 m x 6,79 m **jib 42 m**

hook height [m]	centerballast [t]	jib position	crane in service torque moment: 135 kNm					horizontal force [kN]	jib position	crane out of service torque moment: 0 kNm					horizontal force [kN]
			corner loads				horizontal force [kN]			corner loads				horizontal force [kN]	
			A [kN]	B [kN]	C [kN]	D [kN]				A [kN]	B [kN]	C [kN]	D [kN]		
15,0	10,0	1	187	264	122	45	21	1	137	203	81	14	46		
		2	243	243	66	66		2	185	185	32	32			
19,5	10,0	1	193	275	123	40	23	1	142	214	82	10	57		
		2	252	252	63	63		2	194	194	30	30			
24,0	10,0	1	199	288	123	34	24	1	171	230	121	62	63		
		2	263	263	58	58		2	213	213	78	78			
28,5	10,0	1	205	302	123	26	25	1	184	266	115	33	68		
		2	275	275	53	53		2	243	243	55	55			
33,0	20,0	1	237	342	148	42	26	1	223	331	132	24	73		
		2	313	313	72	72		2	301	301	54	54			
37,5	30,0	1	269	384	172	57	28	1	263	399	148	12	79		
		2	352	352	89	89		2	362	362	50	50			
42,0	45,0	1	315	440	208	82	29	1	317	485	175	8	84		
		2	406	406	117	117		2	439	439	54	54			
46,5	62,5	1	368	505	252	114	30	1	379	585	207	8	90		
		2	467	467	152	152		2	527	527	62	62			
51,0	82,5	1	428	577	301	152	32	1	450	693	247	8	97		
		2	536	536	193	193		2	625	625	74	74			

3.4.6.4 Centerballasts and corner loads according to DIN 15019

for a travelling tower crane on  
an undercarriage without climbing drive



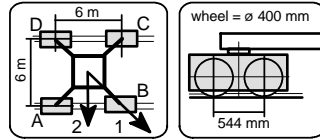
**UW 260.2** Corner distance 5 m x 6,79 m **jib 46 m**

hook height [m]	centerballast [t]	jib position	crane in service torque moment: 135 kNm					horizontal force [kN]	jib position	crane out of service torque moment: 0 kNm					horizontal force [kN]
			corner loads				horizontal force [kN]			corner loads				horizontal force [kN]	
			A [kN]	B [kN]	C [kN]	D [kN]				A [kN]	B [kN]	C [kN]	D [kN]		
15,0	12,5	1	196	273	132	55	21	1	137	250	65	8	45		
		2	252	252	76	76		2	212	212	18	18			
19,5	12,5	1	202	285	133	50	22	1	139	264	62	8	57		
		2	262	262	73	73		2	222	222	15	15			
24,0	15,0	1	214	304	139	50	24	1	152	281	71	8	62		
		2	279	279	75	75		2	238	238	18	18			
28,5	17,5	1	227	324	146	49	25	1	164	300	78	8	68		
		2	297	297	76	76		2	273	273	70	70			
33,0	20,0	1	240	346	151	46	26	1	229	344	133	18	73		
		2	317	317	75	75		2	312	312	50	50			
37,5	32,5	1	279	394	182	67	27	1	276	419	155	12	79		
		2	362	362	99	99		2	380	380	51	51			
42,0	47,5	1	324	451	218	92	29	1	329	507	181	8	84		
		2	416	416	127	127		2	457	457	55	55			
46,5	67,5	1	383	522	266	127	30	1	399	610	220	9	90		
		2	483	483	166	166		2	551	551	67	67			
51,0	87,5	1	442	595	313	160	31	1	466	722	254	8	95		
		2	553	553	202	202		2	651	651	75	75			



3.4.7.2 Centerballasts and corner loads according to DIN 15019

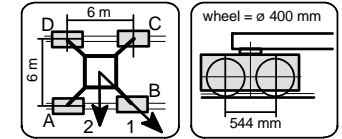
for a travelling tower crane on  
an undercarriage without climbing drive



UW 260.2		Corner distance 6 m x 6 m					jib 36 m						
hook height [m]	centerballast [t]	jib position	crane in service torque moment: 135 kNm				horizontal force [kN]	jib position	crane out of service torque moment: 0 kNm				horizontal force [kN]
			corner loads						corner loads				
			A [kN]	B [kN]	C [kN]	D [kN]		A [kN]	B [kN]	C [kN]	D [kN]		
15,0	5,0	1	132	239	132	24	21	1	75	160	75	8	45
		2	208	208	56	56		2	137	137	52	52	
19,5	5,0	1	135	250	135	20	23	1	75	172	75	8	57
		2	216	216	53	53		2	153	153	87	87	
24,0	5,0	1	138	262	138	14	24	1	123	198	123	49	62
		2	226	226	51	51		2	176	176	70	70	
28,5	5,0	1	141	275	141	8	25	1	126	232	126	21	68
		2	236	236	47	47		2	201	201	52	52	
33,0	12,5	1	164	309	164	18	26	1	149	288	149	9	73
		2	266	266	61	61		2	247	247	50	50	
37,5	20,0	1	186	343	186	28	28	1	156	363	156	8	78
		2	297	297	74	74		2	296	296	45	45	
42,0	32,5	1	220	392	220	48	29	1	183	447	183	8	84
		2	342	342	99	99		2	360	360	50	50	
46,5	45,0	1	256	443	256	69	30	1	208	539	208	8	90
		2	388	388	124	124		2	429	429	53	53	
51,0	62,5	1	304	507	304	102	32	1	255	640	255	8	97
		2	448	448	161	161		2	513	513	66	66	
55,5	77,5	1	346	567	346	125	33	1	283	751	283	8	102
		2	503	503	190	190		2	594	594	68	68	

3.4.7.3 Centerballasts and corner loads according to DIN 15019

for a travelling tower crane on  
an undercarriage without climbing drive



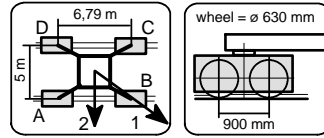
UW 260.2		Corner distance 6 m x 6 m					jib 42 m						
hook height [m]	centerballast [t]	jib position	crane in service torque moment: 135 kNm				horizontal force [kN]	jib position	crane out of service torque moment: 0 kNm				horizontal force [kN]
			corner loads						corner loads				
			A [kN]	B [kN]	C [kN]	D [kN]		A [kN]	B [kN]	C [kN]	D [kN]		
15,0	0,0	1	129	233	129	25	21	1	70	187	70	8	46
		2	203	203	56	56		2	147	147	20	20	
19,5	0,0	1	133	244	133	21	23	1	69	201	69	8	57
		2	212	212	54	54		2	155	155	19	19	
24,0	2,5	1	142	263	142	21	24	1	81	216	81	8	63
		2	227	227	57	57		2	183	183	71	71	
28,5	2,5	1	145	276	145	15	25	1	130	241	130	20	68
		2	238	238	53	53		2	209	209	52	52	
33,0	7,5	1	161	303	161	19	26	1	139	298	139	8	73
		2	262	262	61	61		2	249	249	43	43	
37,5	17,5	1	189	345	189	34	28	1	157	376	157	8	79
		2	299	299	80	80		2	304	304	44	44	
42,0	30,0	1	224	394	224	54	29	1	184	461	184	8	84
		2	344	344	104	104		2	369	369	49	49	
46,5	45,0	1	266	451	266	80	30	1	220	555	220	8	90
		2	397	397	135	135		2	445	445	57	57	
51,0	60,0	1	308	510	308	107	32	1	254	658	254	8	97
		2	451	451	166	166		2	523	523	63	63	
55,5	77,5	1	356	577	356	135	33	1	293	772	293	8	103
		2	512	512	200	200		2	612	612	71	71	





3.4.8.1 Centerballasts and corner loads according to DIN 15019

for a travelling tower crane on  
an undercarriage without climbing drive

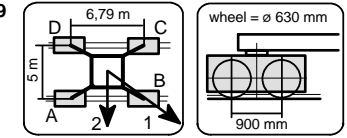


**UW 260.3** Corner distance 5 m x 6,79 m **jib 30 m**

hook height [m]	centerballast [t]	jib position	crane in service torque moment: 135 kNm					horizontal force [kN]	jib position	crane out of service torque moment: 0 kNm					horizontal force [kN]
			corner loads				horizontal force			corner loads				horizontal force	
			A [kN]	B [kN]	C [kN]	D [kN]				A [kN]	B [kN]	C [kN]	D [kN]		
15,0	17,5	1	204	286	135	53	21	1	142	199	95	38	45		
		2	264	264	76	76		2	183	183	54	54			
19,5	17,5	1	210	298	136	48	22	1	147	208	96	35	56		
		2	273	273	73	73		2	191	191	52	52			
24,0	17,5	1	216	310	137	42	24	1	181	229	141	94	62		
		2	284	284	68	68		2	215	215	107	107			
28,5	17,5	1	222	324	137	35	25	1	194	264	135	65	67		
		2	296	296	63	63		2	245	245	84	84			
33,0	27,5	1	254	364	161	52	26	1	233	328	153	58	73		
		2	334	334	82	82		2	302	302	84	84			
37,5	37,5	1	286	406	186	67	27	1	273	396	169	46	78		
		2	373	373	100	100		2	362	362	80	80			
42,0	47,5	1	319	449	210	80	29	1	314	468	185	31	84		
		2	413	413	116	116		2	425	425	73	73			
46,5	60,0	1	360	500	241	100	30	1	364	552	206	18	89		
		2	461	461	139	139		2	500	500	70	70			
51,0	80,0	1	419	572	291	138	32	1	435	659	245	21	96		
		2	530	530	180	180		2	597	597	83	83			
55,5	100,0	1	479	646	339	173	33	1	506	771	282	17	102		
		2	600	600	219	219		2	698	698	90	90			

3.4.8.2 Centerballasts and corner loads according to DIN 15019

for a travelling tower crane on  
an undercarriage without climbing drive

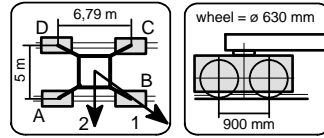


**UW 260.3** Corner distance 5 m x 6,79 m **jib 36 m**

hook height [m]	centerballast [t]	jib position	crane in service torque moment: 135 kNm					horizontal force [kN]	jib position	crane out of service torque moment: 0 kNm					horizontal force [kN]
			corner loads				horizontal force			corner loads				horizontal force	
			A [kN]	B [kN]	C [kN]	D [kN]				A [kN]	B [kN]	C [kN]	D [kN]		
15,0	15,0	1	198	278	131	51	21	1	136	192	88	32	45		
		2	256	256	73	73		2	178	178	77	77			
19,5	15,0	1	204	289	132	46	23	1	167	202	138	103	57		
		2	265	265	70	70		2	193	193	113	113			
24,0	15,0	1	210	302	132	40	24	1	179	235	133	77	62		
		2	276	276	66	66		2	219	219	93	93			
28,5	15,0	1	216	315	132	33	25	1	192	270	126	48	68		
		2	288	288	61	61		2	249	249	70	70			
33,0	22,5	1	242	349	151	43	26	1	225	329	138	34	73		
		2	319	319	73	73		2	300	300	63	63			
37,5	32,5	1	274	391	175	58	28	1	265	397	154	22	78		
		2	358	358	91	91		2	360	360	59	59			
42,0	47,5	1	319	446	212	84	29	1	319	482	182	19	84		
		2	411	411	119	119		2	437	437	64	64			
46,5	65,0	1	372	510	255	116	30	1	382	579	215	18	90		
		2	472	472	155	155		2	524	524	73	73			
51,0	82,5	1	426	576	299	148	32	1	444	682	247	16	97		
		2	534	534	190	190		2	615	615	79	79			
55,5	105,0	1	492	656	353	190	33	1	524	799	291	16	102		
		2	610	610	235	235		2	723	723	92	92			

3.4.8.3 Centerballasts and corner loads according to DIN 15019

for a travelling tower crane on  
an undercarriage without climbing drive

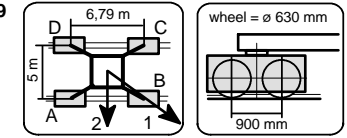


**UW 260.3** Corner distance 5 m x 6,79 m **jib 42 m**

hook height [m]	centerballast [t]	jib position	crane in service torque moment: 135 kNm					horizontal force [kN]	jib position	crane out of service torque moment: 0 kNm					horizontal force [kN]
			corner loads				horizontal force			corner loads				horizontal force	
			A [kN]	B [kN]	C [kN]	D [kN]				A [kN]	B [kN]	C [kN]	D [kN]		
15,0	10,0	1	195	272	130	52	21	1	144	211	88	22	46		
		2	250	250	74	74		2	192	192	40	40			
19,5	10,0	1	200	283	130	48	23	1	150	221	89	18	57		
		2	260	260	70	70		2	202	202	38	38			
24,0	10,0	1	206	296	131	41	24	1	178	237	129	70	63		
		2	271	271	66	66		2	221	221	86	86			
28,5	10,0	1	213	310	131	34	25	1	192	273	122	40	68		
		2	283	283	61	61		2	251	251	63	63			
33,0	20,0	1	245	350	156	50	26	1	231	338	140	32	73		
		2	321	321	79	79		2	309	309	62	62			
37,5	30,0	1	277	392	180	65	28	1	271	407	156	20	79		
		2	360	360	97	97		2	369	369	57	57			
42,0	45,0	1	322	448	216	90	29	1	325	493	183	16	84		
		2	413	413	125	125		2	447	447	62	62			
46,5	62,5	1	375	513	259	122	30	1	386	593	215	16	90		
		2	475	475	160	160		2	535	535	70	70			
51,0	82,5	1	435	585	309	160	32	1	458	701	255	16	97		
		2	543	543	201	201		2	633	633	81	81			
55,5	105,0	1	502	666	364	200	33	1	537	821	298	16	103		
		2	620	620	245	245		2	742	742	94	94			

3.4.8.4 Centerballasts and corner loads according to DIN 15019

for a travelling tower crane on  
an undercarriage without climbing drive

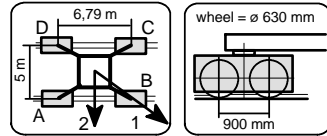


**UW 260.3** Corner distance 5 m x 6,79 m **jib 46 m**

hook height [m]	centerballast [t]	jib position	crane in service torque moment: 135 kNm					horizontal force [kN]	jib position	crane out of service torque moment: 0 kNm					horizontal force [kN]
			corner loads				horizontal force			corner loads				horizontal force	
			A [kN]	B [kN]	C [kN]	D [kN]				A [kN]	B [kN]	C [kN]	D [kN]		
15,0	12,5	1	204	281	139	63	21	1	145	257	73	16	45		
		2	260	260	84	84		2	220	220	25	25			
19,5	12,5	1	210	292	140	58	22	1	146	272	70	16	57		
		2	270	270	81	81		2	229	229	23	23			
24,0	15,0	1	222	311	147	58	24	1	160	289	79	16	62		
		2	287	287	83	83		2	246	246	26	26			
28,5	17,5	1	235	332	153	57	25	1	172	307	86	16	68		
		2	305	305	83	83		2	280	280	78	78			
33,0	20,0	1	248	353	159	54	26	1	237	351	140	26	73		
		2	324	324	83	83		2	320	320	58	58			
37,5	32,5	1	287	402	190	74	27	1	284	427	163	19	79		
		2	370	370	106	106		2	387	387	59	59			
42,0	47,5	1	332	458	226	100	29	1	337	515	189	16	84		
		2	423	423	134	134		2	465	465	63	63			
46,5	67,5	1	391	530	274	135	30	1	406	618	228	17	90		
		2	491	491	173	173		2	559	559	75	75			
51,0	87,5	1	450	603	321	168	31	1	474	730	262	16	95		
		2	561	561	210	210		2	658	658	83	83			
55,5	107,5	1	510	676	370	204	33	1	542	848	295	16	101		
		2	630	630	250	250		2	760	760	90	90			

3.4.8.5 Centerballasts and corner loads according to DIN 15019

for a travelling tower crane on  
an undercarriage without climbing drive

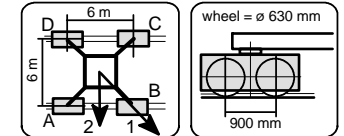


UW 260.3 Corner distance 5 m x 6,79 m jib 50 m

Table with columns for hook height, centerballast, jib position, crane in service torque moment (135 kNm), crane out of service torque moment (0 kNm), corner loads (A, B, C, D), and horizontal force. Rows list various hook heights from 15.0 to 55.5 m.

3.4.9.1 Centerballasts and corner loads according to DIN 15019

for a travelling tower crane on  
an undercarriage without climbing drive

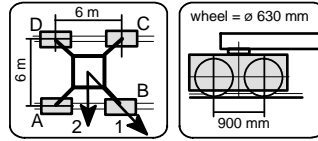


UW 260.3 Corner distance 6 m x 6 m jib 30 m

Table with columns for hook height, centerballast, jib position, crane in service torque moment (135 kNm), crane out of service torque moment (0 kNm), corner loads (A, B, C, D), and horizontal force. Rows list various hook heights from 15.0 to 64.5 m.

3.4.9.2 Centerballasts and corner loads according to DIN 15019

for a travelling tower crane on  
an undercarriage without climbing drive

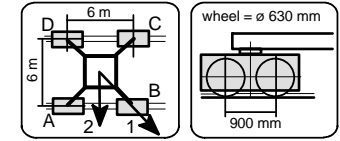


**UW 260.3** Corner distance 6 m x 6 m **jib 36 m**

hook height [m]	centerballast [t]	jib position	crane in service torque moment: 135 kNm				horizontal force [kN]	jib position	crane out of service torque moment: 0 kNm				horizontal force [kN]
			corner loads						corner loads				
			A [kN]	B [kN]	C [kN]	D [kN]			A [kN]	B [kN]	C [kN]	D [kN]	
15,0	5,0	1	139	247	139	32	21	1	82	168	82	16	45
		2	215	215	63	63		2	144	144	60	60	
19,5	5,0	1	143	258	143	28	23	1	83	179	83	16	57
		2	224	224	61	61		2	161	161	94	94	
24,0	5,0	1	146	270	146	22	24	1	131	206	131	56	62
		2	234	234	58	58		2	184	184	78	78	
28,5	5,0	1	149	283	149	16	25	1	134	240	134	29	68
		2	244	244	55	55		2	209	209	60	60	
33,0	12,5	1	171	316	171	26	26	1	156	296	156	17	73
		2	274	274	69	69		2	255	255	57	57	
37,5	20,0	1	193	351	193	36	28	1	163	371	163	16	78
		2	305	305	82	82		2	304	304	53	53	
42,0	32,5	1	228	400	228	56	29	1	191	455	191	16	84
		2	349	349	106	106		2	368	368	58	58	
46,5	45,0	1	263	450	263	77	30	1	216	547	216	16	90
		2	396	396	131	131		2	436	436	61	61	
51,0	62,5	1	312	515	312	109	32	1	262	648	262	16	97
		2	456	456	169	169		2	521	521	73	73	
55,5	77,5	1	354	575	354	133	33	1	291	759	291	16	102
		2	510	510	197	197		2	602	602	76	76	
60,0	97,5	1	408	648	408	169	35	1	341	877	341	16	109
		2	578	578	239	239		2	698	698	89	89	
64,5	115,0	1	459	717	459	201	37	1	378	1006	378	16	117
		2	642	642	277	277		2	794	794	94	94	

3.4.9.3 Centerballasts and corner loads according to DIN 15019

for a travelling tower crane on  
an undercarriage without climbing drive

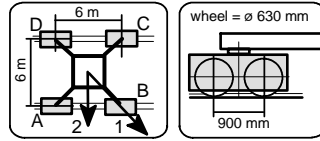


**UW 260.3** Corner distance 6 m x 6 m **jib 42 m**

hook height [m]	centerballast [t]	jib position	crane in service torque moment: 135 kNm				horizontal force [kN]	jib position	crane out of service torque moment: 0 kNm				horizontal force [kN]
			corner loads						corner loads				
			A [kN]	B [kN]	C [kN]	D [kN]			A [kN]	B [kN]	C [kN]	D [kN]	
15,0	0,0	1	137	241	137	33	21	1	77	195	77	16	46
		2	211	211	64	64		2	155	155	28	28	
19,5	0,0	1	140	252	140	29	23	1	77	209	77	16	57
		2	219	219	61	61		2	163	163	26	26	
24,0	2,5	1	150	271	150	29	24	1	88	224	88	16	63
		2	235	235	65	65		2	191	191	79	79	
28,5	2,5	1	153	284	153	22	25	1	138	249	138	28	68
		2	246	246	61	61		2	216	216	60	60	
33,0	7,5	1	169	311	169	27	26	1	147	306	147	16	73
		2	270	270	68	68		2	257	257	51	51	
37,5	17,5	1	197	352	197	42	28	1	165	383	165	16	79
		2	307	307	87	87		2	312	312	52	52	
42,0	30,0	1	232	402	232	62	29	1	191	469	191	16	84
		2	352	352	112	112		2	377	377	56	56	
46,5	45,0	1	274	459	274	88	30	1	228	563	228	16	90
		2	405	405	143	143		2	452	452	65	65	
51,0	60,0	1	316	518	316	114	32	1	261	666	261	16	97
		2	459	459	173	173		2	531	531	71	71	
55,5	77,5	1	364	585	364	143	33	1	300	780	300	16	103
		2	520	520	208	208		2	619	619	79	79	
60,0	97,5	1	419	658	419	179	35	1	350	900	350	16	109
		2	588	588	249	249		2	716	716	91	91	
64,5	115,0	1	469	728	469	211	37	1	385	1032	385	16	118
		2	652	652	287	287		2	814	814	95	95	

3.4.9.4 Centerballasts and corner loads according to DIN 15019

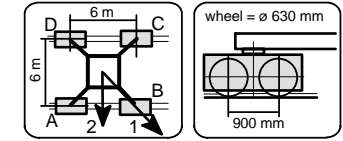
for a travelling tower crane on  
an undercarriage without climbing drive



UW 260.3		Corner distance 6 m x 6 m					jib 46 m						
hook height [m]	centerballast [t]	jib position	crane in service torque moment: 135 kNm corner loads				horizontal force [kN]	jib position	crane out of service torque moment: 0 kNm corner loads				horizontal force [kN]
			A [kN]	B [kN]	C [kN]	D [kN]			A [kN]	B [kN]	C [kN]	D [kN]	
15,0	5,0	1	153	256	153	50	21	1	78	245	78	16	45
		2	226	226	80	80	2	185	185	23	23		
19,5	5,0	1	156	268	156	45	22	1	77	259	77	16	57
		2	235	235	78	78	2	193	193	21	21		
24,0	7,5	1	166	286	166	46	24	1	89	275	89	16	62
		2	251	251	81	81	2	213	213	89	89		
28,5	7,5	1	169	300	169	39	25	1	86	292	86	16	68
		2	261	261	77	77	2	239	239	70	70		
33,0	10,0	1	179	321	179	36	26	1	157	324	157	16	73
		2	279	279	78	78	2	273	273	54	54		
37,5	17,5	1	201	356	201	45	27	1	162	402	162	16	79
		2	311	311	91	91	2	322	322	49	49		
42,0	32,5	1	241	412	241	71	29	1	201	489	201	16	84
		2	362	362	121	121	2	394	394	59	59		
46,5	47,5	1	282	469	282	95	30	1	234	586	234	16	90
		2	415	415	150	150	2	469	469	66	66		
51,0	65,0	1	329	536	329	123	31	1	274	694	274	16	95
		2	475	475	183	183	2	554	554	74	74		
55,5	80,0	1	371	595	371	147	33	1	302	805	302	16	101
		2	530	530	213	213	2	635	635	77	77		
60,0	100,0	1	426	669	426	183	34	1	350	928	350	16	108
		2	598	598	254	254	2	733	733	88	88		
64,5	117,5	1	480	740	480	220	37	1	394	1057	394	16	118
		2	664	664	296	296	2	833	833	97	97		

3.4.9.5 Centerballasts and corner loads according to DIN 15019

for a travelling tower crane on  
an undercarriage without climbing drive



UW 260.3		Corner distance 6 m x 6 m					jib 50 m						
hook height [m]	centerballast [t]	jib position	crane in service torque moment: 135 kNm corner loads				horizontal force [kN]	jib position	crane out of service torque moment: 0 kNm corner loads				horizontal force [kN]
			A [kN]	B [kN]	C [kN]	D [kN]			A [kN]	B [kN]	C [kN]	D [kN]	
15,0	12,5	1	179	283	179	75	21	1	93	299	93	16	46
		2	253	253	106	106	2	225	225	25	25		
19,5	12,5	1	183	294	183	71	23	1	93	313	93	16	58
		2	262	262	104	104	2	234	234	23	23		
24,0	15,0	1	192	313	192	71	24	1	104	329	104	16	63
		2	278	278	107	107	2	249	249	27	27		
28,5	15,0	1	195	327	195	64	25	1	101	347	101	16	68
		2	288	288	103	103	2	270	270	91	91		
33,0	17,5	1	205	348	205	62	26	1	110	367	110	16	74
		2	306	306	104	104	2	305	305	75	75		
37,5	20,0	1	214	371	214	58	28	1	181	420	181	16	79
		2	325	325	104	104	2	342	342	57	57		
42,0	32,5	1	249	421	249	77	29	1	206	508	206	16	85
		2	370	370	128	128	2	408	408	60	60		
46,5	47,5	1	291	479	291	103	30	1	242	605	242	16	91
		2	424	424	158	158	2	484	484	68	68		
51,0	62,5	1	333	538	333	128	32	1	274	710	274	16	97
		2	478	478	188	188	2	564	564	73	73		
55,5	80,0	1	381	606	381	156	33	1	311	828	311	16	103
		2	540	540	222	222	2	654	654	79	79		
60,0	100,0	1	436	680	436	192	35	1	358	952	358	16	110
		2	609	609	263	263	2	752	752	90	90		
64,5	120,0	1	493	757	493	229	37	1	405	1086	405	16	118
		2	680	680	306	306	2	857	857	99	99		